



NEWSLETTER

JANUARY 2012

P.O. Box 773, Stockton, CA 95201-0773

January 2012

Dear Homeowners and Businesses:

This newsletter is being sent to provide an update on activities of the Reclamation District 1614 Board of Trustees, levee maintenance requirements, regulatory issues, and other work to improve the security and maintenance of the pump stations and levees. We hope that you will find the newsletter to be informative.

We will continue to update you at regular intervals on the state of the District, and we invite your oversight of this Board in maintaining these commitments we made to you. Also, feel free to leave a message, along with your phone number, on the District's Hotline at (209) 992-2827 or send an e-mail to RD1614@gmail.com. We will respond to your call or e-mail.

Sincerely,

A handwritten signature in black ink, appearing to read "W. Dunning".

Bill Dunning, Chair

RD 1614 Board of Trustees

What Is Reclamation District 1614—Smith Tract?

Founded in 1914, Reclamation District 1614 is a governmental special district. About two dozen such districts are within the County of San Joaquin. The reclamation districts were originally formed to protect against flooding, for drainage, and for irrigation. RD 1614 is considered an urban district and provides two of the three purposes—drainage and protection against floods.

RD 1614 owns and operates ten storm drain/pump station facilities. The City of Stockton and/or the County of San Joaquin are responsible for the storm drain lines conveying the storm water to the District pumping facilities. The District boundaries are generally as follows: the Calaveras River on the north, San Joaquin River on the west, Smith Canal on the south, and Pershing Avenue on the east.

The District has an elected board whose trustees are elected for four-year terms with an election held every two years. A part-time levee superintendent and a district secretary work for the board.

Levee Encroachment Standards

First, the Board has adopted and implemented regulatory procedures for any work or improvements on the levee. If you are contemplating any work on the levees, you must review the regulations and complete an application for an encroachment permit. You can get a copy of the regulations to learn exactly what is and what is not permissible on the levees by sending an e-mail to RD1614@gmail.com or by calling Levee Superintendent Max Gallegos at (209) 992-2827.

After the District Engineer reviews the permit application, he and the District Superintendent will make an inspection and generate an Engineer's Report for the Board of Trustees' consideration.

Second, a policy has been established for adding any rip rap to the levee banks, subject to the District's evaluation. Again, please contact Max at (209) 992-2827 with any questions or concerns.



Progress Report

Pump Stations

Following the pump station photograph is a photograph of typical new controls being installed in each of the pump stations in the District. A control box cover and pump are also shown. Thus far, new controls have been installed in Buena Vista Pump Station #1, Franklin Avenue Pump Station #3, Plymouth Road (Smith Canal) Pump Station #4, Kirk Avenue Pump Station #8, and Plymouth Road (Calaveras River) Pump Station #9. Installation of new controls at Wisconsin Avenue Pump Station #7 is underway, and controls will soon be installed at the other four stations.



Pump Station



Motor Control Center

The Motor Control Center is digital and can accommodate the addition of future pumps. The incorporation of a telemetry system ensures that the Levee Superintendent will be alerted immediately of any problem. These control boxes are state-of-the-art devices to avoid failures.

Additionally, pumps and pumping stations are required to be secure to discourage vandalism and ensure the safety of our residents and businesses.



Blue Motor Pump

The blue motor pump shown in the photograph above was rebuilt within the last three years. The pump at the Lake Street Pump Station #2 will be rebuilt soon to ensure an increase in its overall efficiency.



Emergency Backup

Workshop and Yard

Plans for a workshop and yard from which to work are being considered.





New Electrical Box

Emergency Transfer Switch

If a Pacific Gas & Electric power failure should occur, the District has an account with Holt Caterpillar Rental for an emergency generator. The District Superintendent would simply call the company to set up, test, and run an appropriate generator. In the past, District staff had to reply on renting a portable pump if a power failure were to occur.

Replacing Discharge Pipe

The District Board recently awarded two contracts for work at the Hogue Avenue Pump Station #10 to Robert Burns Construction to replace a deteriorated discharge pipe that goes through the levee to the Calaveras River. The job commenced September 13 and has been completed. Also, Robert Burns Construction will be repairing the levee and placing rip rap on the levee. Adjacent to it is the Lake Street Pump Station #2, where the levee will be repaired and rip rap placed.

Beaver/Rodent Activity

About seven beavers inhabit the Smith Canal. Working with the California Department of Fish and Game, a program has been put in place west of Interstate 5 to the Deep Water Channel to issue



permits to trap and address the beaver problem. Here is an example of why this action is required: Emergency repairs



on our levees adjoining three lots and possibly one more have been necessary due to the beaver activity. If beavers, ground squirrels or other rodents pop up in your neighborhood, please call the District Hotline immediately.

Wisconsin Pump Station

The Wisconsin Pump Station is failing and must be repaired. However, the good news is that after careful study, the District has determined that a cost-effective temporary repair to the station would last approximately five years. The temporary repairs are expected to be done in early 2012. This will also postpone the need for a Proposition 218 election to fund permanent repairs to the station.

Smith Canal Closure Structure

The decision on whether to move forward with the Smith Canal closure structure has been put on hold while FEMA is in the process of finalizing its flood area maps.

No Proposition 218 Election this Spring

RD 1614 chose to delay proceeding with its Proposition 218 election this Spring to fund the Smith Canal Closure Structure and Wisconsin Pump Station for two reasons: 1) uncertainty about the Federal Emergency Management Agency's (FEMA's) remapping effort and 2) availability of matching funds sought from the State of California Department of Water Resources (DWR) under the Early Implementation Grant Program (EIP) and the 1E integrated Regional Water Management (IRWM) Stormwater Grant.

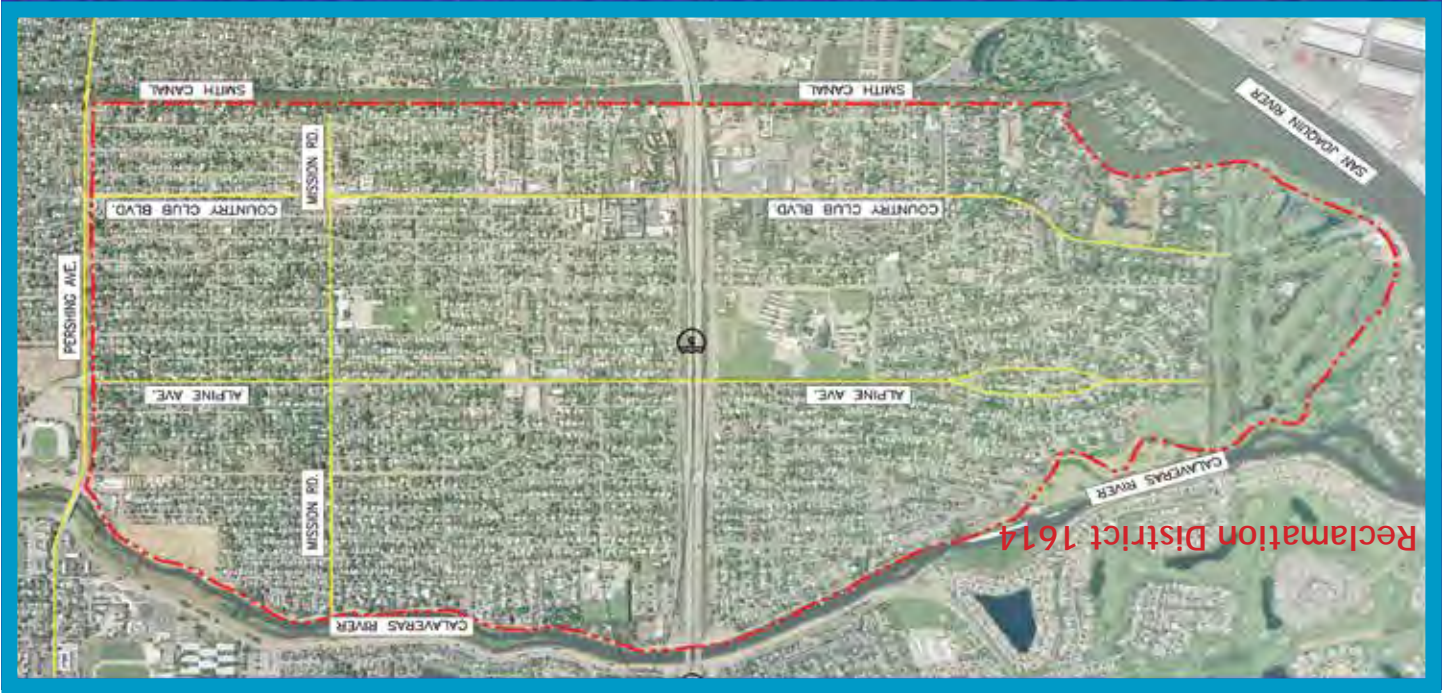


District Trustees
Bill Dunning
Ben Koch
Robert Wise

District Superintendent
William M. Gallegos
District Hotline
(209) 992-2827 or
RD 1614@neumiller.com

District Engineer
Kjeldsen, Sinnok & Neudeck, Inc.
Christopher H. Neudeck
(209) 946-0268

CONTACT INFORMATION



RECLAMATION DISTRICT 1614
SMITH TRACT
P.O. Box 773
Stockton, CA 95201-0773

