

**RECLAMATION DISTRICT NO. 1614**

**AGENDA FOR SPECIAL BOARD OF TRUSTEES MEETING**

**2:00 P.M. MAY 22, 2025**

**3121 WEST MARCH LANE, SUITE 100  
STOCKTON, CA 95219**

**AGENDA**

1. Call to Order/Roll Call.
2. **Public Comment.** The public may comment on any matter within the District's jurisdiction that is not on the agenda. Matters on the agenda may be commented on by the public when the matter is taken up. All comments are limited to 5 minutes for general public comment and per agenda item in accordance with Resolution 2014-06.
3. **Agency Reports.** Report on San Joaquin Area Flood Control Agency's Smith Canal Gate Structure Project.
  - a. Discussion and Possible Action to respond to request from SJAFCA to provide or conduct annual inspection reports for RD 1614 pump stations to meet FEMA requirements for the Smith Canal Gate LOMR application.
  - b. Discussion and Direction Regarding District Review of Smith Canal Gate Operations and Maintenance Manual.
4. **Minutes.** Approval of Minutes of Regular meeting of April 7, 2025 meeting.
5. **District Finances.** Presentation of Financial Status Reports. Discussion and possible action.
6. **District Engineer Report.** Presentation of Engineer's Report. Discussion and possible action:

**I. LEVEE MAINTENANCE PROJECT — FY 2024-2025**

- A. No bids received for the levee restoration along SJ River at Stockton Golf and Country Club. Seek the Board of Trustees authority to negotiate with a contractor to complete the work.

***EXHIBIT A: Restoration Plan***

*This agenda shall be made available upon request in alternative formats to persons with a disability, as required by the Americans with Disabilities Act of 1990 (42 U.S.C. § 12132) and the Ralph M. Brown Act (California Government Code §54954.2). Persons requesting a disability related modification or accommodation in order to participate in the meeting should contact Rhonda Olmo at 209/948-8200 during regular business hours, at least forty-eight hours prior to the time of the meeting.*

*Materials related to an item on this Agenda submitted to the Trustees after distribution of the agenda packet are available for public inspection in the office of the District Secretary at Neumiller & Beardslee, 3121 West March Lane, Suite 100, Stockton, California during normal business hours. The agenda is also available on the Reclamation District website at: <http://www.rd1614.com/>*

- B. Review upcoming levee restoration along Smith Canal and the general interest of landowners to have rock slope protection placed upon their lots.

## **II. CAL OES PUBLIC ASSISTANCE APPROVAL FOR DR/FMAG/CDA # 4683**

- A. Review District's resubmittal to State of California Office of Emergency Service (OES).

***EXHIBIT B: Email correspondence from KSN Inc. dated 5/12/25 explaining current status.***

## **III. STAFF GAUGE INSTALLATION PROJECT**

- A. Review the progress of the staff gauge installation up and down Smith Canal.
  - a) Staff Gauge No 1.: Located adjacent to the entry gate at the end of Moreing Drive, (Smith Canal Side) staff gauge 4-6' off WSS
  - b) Staff Gauge No 2.: Location is Buena Vista pump station, staff gauge to be mounted to pump station discharge pipe and this location will include a pressure transducer for digital read out through alarm agent system.
  - c) Staff Gauge No 3.: Location is American Legion Park at the end of Smith Canal on the north side adjacent to the city own pump station. Staff gauge is to be located roughly 6 feet from the water's edge near the pump station discharge.
  - d) Staff Gauge No 4.: Location adjacent to the entry gate at end of Moreing Drive (Atherton Cove Side)
  - e) KSN Inc's field crew out set Bench Marks's at Staff Gauge sites on Wednesday April 2<sup>nd</sup>, to be used by Dino and Son Excavating as a reference for the installation of the staff gauge frames. Dino and Son Excavating is scheduled to install gauge frames and backer boards May 29<sup>th</sup> and 30<sup>th</sup> as well as install the conduit for Buena Vista Pump Station. KSN will purchase fiberglass staff gauges. Abel has ordered and received pressure transducer and digital read out. Once the frames and we KSN receive the porcelain staff gauges the surveyors will work with Abel to install them via the district boat or through KSN's small Klamath boat.

***EXHIBIT C: Base Map with Staff Gauge Locations depicted***

*This agenda shall be made available upon request in alternative formats to persons with a disability, as required by the Americans with Disabilities Act of 1990 (42 U.S.C. § 12132) and the Ralph M. Brown Act (California Government Code §54954.2). Persons requesting a disability related modification or accommodation in order to participate in the meeting should contact Rhonda Olmo at 209/948-8200 during regular business hours, at least forty-eight hours prior to the time of the meeting.*

*Materials related to an item on this Agenda submitted to the Trustees after distribution of the agenda packet are available for public inspection in the office of the District Secretary at Neumiller & Beardslee, 3121 West March Lane, Suite 100, Stockton, California during normal business hours. The agenda is also available on the Reclamation District website at: <http://www.rd1614.com/>*

7. **USACE Borings**. Discussion and possible action to approve request from the U.S. Army Corps of Engineers for right-of-entry to conduct utility pothole investigations and surveys on district property as part of the Lower San Joaquin Levee Improvement Project.
8. **Letter of Map Revision**. Discussion and possible action regarding Letter of Map Revision.
9. **Superintendent's Report**. Presentation of Superintendent's Report; request for direction.
10. **Report on Meetings Attended**.
11. **Trustee Reports**. Discussion and direction on Trustee Reports.
12. **District Calendar**.
  - a. Next Meeting – June 2, 2025.
13. **Items for Future Meetings**. Items for future meetings.
14. **Correspondence**. Discussion and direction.
15. **District Bills**. Motion to Approve of Bills.
16. **Adjournment**.

*This agenda shall be made available upon request in alternative formats to persons with a disability, as required by the Americans with Disabilities Act of 1990 (42 U.S.C. § 12132) and the Ralph M. Brown Act (California Government Code §54954.2). Persons requesting a disability related modification or accommodation in order to participate in the meeting should contact Rhonda Olmo at 209/948-8200 during regular business hours, at least forty-eight hours prior to the time of the meeting.*

*Materials related to an item on this Agenda submitted to the Trustees after distribution of the agenda packet are available for public inspection in the office of the District Secretary at Neumiller & Beardslee, 3121 West March Lane, Suite 100, Stockton, California during normal business hours. The agenda is also available on the Reclamation District website at: <http://www.rd1614.com/>*

**AGENDA PACKET  
RECLAMATION DISTRICT 1614  
MAY 19, 2025**

<b><u>ITEM</u></b>	<b><u>COMMENTARY</u></b>
1.	Self-explanatory.
2.	Self-explanatory.
3.	Self-explanatory.
4.	See attached.
5.	See attached.
6.	See attached.
7.	See attached.
8.	Self-explanatory.
9.	See attached.
10.	Self-explanatory.
11.	Self-explanatory.
12.	See attached.
13.	Self-explanatory.
14.	See attached.
15.	See attached.
16.	Self-explanatory.



# ITEM 4

DRAFT MINUTES OF REGULAR MEETING OF BOARD OF TRUSTEES  
FOR RECLAMATION DISTRICT 1614  
HELD MONDAY, APRIL 7, 2025

The April Regular Meeting of the Board of Trustees of Reclamation District 1614 was held on Monday, April 7, 2025, at the hour of 2:00 p.m.

Roll Call of Board Members and Staff:

President Dominick Gulli, Trustee Kevin Kauffman, Trustee Chris Gaines, Attorney Andy Pinasco, Engineer Chris Neudeck, Superintendent Abel Palacio, and Secretary Rhonda Olmo

The following members of the public were present: Sarah Vigil (Port City Marketing)

Absent were: None.

**Item 1. Call to Order/Roll Call.** President Gulli called the meeting to order at 2:01 p.m.

**Item 2. Public Comment.** The public may comment on any matter within the District's jurisdiction that is not on the agenda. Matters on the agenda may be commented on by the public when the matter is taken up. All comments are limited to 5 minutes for general public comment and per agenda item in accordance with Resolution 2014-06.

None

**Item 3. Minutes.** Approval of Minutes of Regular meeting of March 3, 2025, meeting.

President Gulli requested that the last sentence under item 14 be removed.

After review,

On a motion by Trustee Kauffman, seconded by Trustee Gaines, the Trustee's present voted unanimously to approve the April 7, 2025 Minutes with the above edit by the following vote:

Ayes: Kauffman, Gaines, Gulli

Noes: None

Abstain: None

Absent: None

**Item 4. District Finances.** Presentation of Financial Status Reports. Discussion and possible action.

- a. Discussion and possible action regarding unpaid 2024/2025 assessments – County General Fund
- b. Discussion and possible action regarding unpaid 2024/2025 assessments – County Wisconsin Fund

Attorney Pinasco reviewed the unpaid assessments with the Trustees. It was determined that Attorney Pinasco will reach out to the Stockton Unified School District to get an understanding of their non-payments.

Rhonda Olmo provided a written and oral report. She reported that the District is at 75% for their fiscal year.

After review,

On a motion by Trustee Kauffman, seconded by Trustee Gaines, the Trustee's present voted unanimously to approve the April Financial Report by the following vote:

Ayes: Kauffman, Gaines, Gulli

Noes: None

Abstain: None

Absent: None

**Item 5. Agency Reports.** Report on San Joaquin Area Flood Control Agency's Smith Canal Gate Structure Project.

- a. Discussion and Direction on SJAFCA submission of CLOMR. – No Report.
- b. Discussion and Possible Action regarding SJAFCA's Reimbursement to District pursuant to the RD 1614/SJAFCA Cooperative Agreement.

Discussion was held. Attorney Pinasco was directed to reach out to Darren Suen regarding the status.

- c. Discussion and Direction Regarding District Review of Smith Canal Gate Operations and Maintenance Manual.

Discussion was held regarding issues related to closures for stop logs.

**Item 6. FEMA Claim.** Discussion and Possible Action to authorize District Official(s) to execute and process the documents necessary for the RD 1614 Smith Tract FEMA claim for the Dec 2022/2023 storms.

Chris Neudeck reported that FEMA has come back with additional requirements to get the FEMA claim through. After discussion, it was determined that Trustee Kauffman will execute the required paperwork needed signing as District President since he was the President of the District when the claim was filed.

After review,

On a motion by Trustee Kauffman, seconded by Trustee Gaines, the Trustee's present voted unanimously to approve the signatures required for the claim and to approve Trustee Kauffman to sign as President by the following vote:

Ayes:	Kauffman, Gaines, Gulli
Noes:	None
Abstain:	None
Absent:	None

**Item 7. District Engineer Report.** Presentation of Engineer's Report. Discussion and possible action:

I. LEVEE MAINTENANCE PROJECT – FY 2024-2025

- A. Review progress of San Rafael Rock Quarry, Inc. (Dutra Construction Co.). Dutra is working with Harj from SG&CC to complete restoration of the golf course rough along top of levee. The delayed restoration works out well for chances of successful growth of turf.
  - a) The work generally consists of:
    - Replacement of sprinklers and irrigation pipes that had been removed prior to construction (see orange highlights on attached as-builts)
    - Grading and prep work
    - Sod at tee box
    - Sod at other specific areas
    - Hydroseed top of levee slopes
    - Hydroseed the remaining areas
  - b) Dutra's Proposed Price is \$202,744. Their scope of work appears to be consistent with the discussion during our site walk with Harj and subsequent conversations. Their contract currently has an allowance of \$82,200. Therefore, we are requesting a Change Order for the difference in the amount of \$120,544.

After review, Chris Neudeck was directed to close out the project with Dutra. The Board authorized KSN to continue developing the project and put it out to bid.

After review,

On a motion by Trustee Kauffman, seconded by Trustee Gaines, the Trustee's present voted unanimously to close out the project and obtain any credit that may be due with Dutra by the following vote:

Ayes: Kauffman, Gaines, Gulli  
Noes: None  
Abstain: None  
Absent: None

On a motion by Trustee Kauffman, seconded by Trustee Gaines, the Trustee's present voted unanimously to approve KSN to continue developing the project and go out to bid by the following vote:

Ayes: Kauffman, Gaines, Gulli  
Noes: None  
Abstain: None  
Absent: None

## II. STAFF GAUGE INSTALLATION PROJECT

### A. Review the progress of the staff gauge installation up and down Smith.

- a) Staff Gauge No. 1: Located adjacent to the entry gate at the end of Moreing Drive, staff gauge 4-6' off WSS.
- b) Staff Gauge No. 2: Location is Buena Vista pump station, staff gauge to be mounted to pump station discharge pipe and this location will include a pressure transducer for digital read out through alarm agent system.
- c) Staff Gauge No. 3: Location is American Legion Park at the end of Smith Canal on the north side adjacent to the city own pump station. Staff gauge is to be located roughly 6 feet from the water's edge near the pump station discharge.
- d) KSN Inc's field crew out setting Benchmark's at Staff Gauge sites on Wednesday April 2<sup>nd</sup>, to be used by Dino and Son Excavating as a reference for the installation of the staff gauge frames. Dino and Son Excavating is tentatively on their schedule and will start based on when the benchmarks are in place. KSN will arrange with Dino and Son Excavating a schedule for them to perform the gauge installation work. KSN will purchase porcelain staff gauges to forward to Abel for purchasing along with the pressure transducer. Abel already has a pressure transducer picked out. Once the frames and we KSN receive the porcelain staff gauges the surveyors will work with Abel to install them via the district boat or through KSN's small Klamath boat.

After review,

On a motion by Trustee Kauffman, seconded by Trustee Gaines, the Trustee's present voted unanimously to approve KSN's installation of staff gauge frames and porcelain staff gauges by the following vote:

Ayes: Kauffman, Gaines, Gulli  
Noes: None  
Abstain: None

Absent: None

**Item 8. Superintendent's Report.** Presentation of Superintendent's Report; request for direction.

Mr. Abel Palacio provided written and oral reports. From his reports he reiterated the following:

- March was a relatively wet month. There were no significant problems with pumps or control systems reported.
- He met with Jack Wilbur on two occasions to plan and design a level gauge system with remote telemetry.
- He has been working with Raco alarm systems to determine the best method to be used to send data from the designated pump station to a web-based internet site for viewing staff gauge level readings remotely.
- A preliminary levee inspection was made of the levee system. There were no issues to report.

For a complete list of items, please see his Superintendent and Levee Inspection Reports.

**Item 9. Letter of Map Revision.** Discussion and possible action regarding Letter of Map Revision.

No report

**Item 10. Report on Meetings Attended.**

Trustee Kauffman reported on meeting with the Country Club regarding the deck on the south end of the clubhouse. He stated the Country Club needs an Encroachment Permit from the District and a building permit from the County. He also needs an Encroachment Permit for the Country Club's new clubhouse building. Chris Neudeck to work with Attorney Pinasco and Trustee Kauffman regarding this item.

**Item 11. Trustee Reports.** Discussion and direction on Trustee Reports.

- a. County Flood Ordinance.
- b. Interior drainage model provided by SJAFCA.
- c. Smith Canal Gate Encroachment Permit.

No report

**Item 12. District Calendar.**

- a. Next Meeting – May 5, 2025.

**Item 13. Town Hall Meeting.** Discussion and direction.

After discussion, it was determined to bring this item back after SJAFCA receives their response from FEMA regarding the Smith Canal Gate.

**Item 14. Items for Future Meetings.** Items for future meetings.

- USACE Borings
- Country Club Encroachment Permit

**Item 15. Correspondence.** Discussion and direction.

Attorney Pinasco reviewed the correspondence received this month with the Trustees.

**Item 16. District Bills.** Motion to Approve of Bills.

After review,

On a motion by Trustee Kauffman, seconded by Trustee Gaines, the Trustee's present voted to approve the March bills by the following vote.

Ayes: Kauffman, Gaines, Gulli

Noes: None

Abstain: None

Absent: None

**Item 17. Adjournment.** President Gulli adjourned the meeting at 3:54 pm.

Respectfully submitted,

Rhonda L. Olmo  
District Secretary

## Reclamation District 1614

## March 2025 Bills

NAME	INVOICE #	AMOUNT	TOTAL \$	WARRANT #	CHECK #	SUBVENTION FUND
Christian Gaines - April 7, 2025 Meeting		\$50.00		6430		
			<b>\$50.00</b>			
Dominick Gulli - April 7, 2025 Meeting		\$150.00		6431		
			<b>\$150.00</b>			
Rhonda Olmo		\$1,738.24		6432		
			<b>\$1,738.24</b>			
Neumiller & Beardslee	352864	\$5,550.50				
			<b>\$5,550.50</b>			
Kjeldsen, Sinnock & Neudeck, Inc.	39861	\$2,366.33		6433		
	39862	\$811.75				
	39863	\$2,021.25				
	39864	\$2,744.00				
	39865	\$759.63				
	40030	\$1,732.93				
	40030	\$689.50				
	40031	\$810.00				
	40032	\$60.00				
	40033	\$7,233.75				
	40034	\$211.75				
	40035	\$1,206.25				
	40036	\$1,020.50				
			<b>\$21,667.64</b>			
Delk Pest Control	264808	\$220.00		6434		
			<b>\$220.00</b>			
Port City Marketing Solutions, Inc.	21784	\$3,541.57		6435		
			<b>\$3,541.57</b>			

Reclamation District 1614

March 2025 Bills

Dalek Lawn Care Service	152	\$130.08		6436		
			<b>\$130.08</b>			
Abel Palacio -March Payroll		\$1,892.32			Direct Deposit	
			<b>\$1,892.32</b>			
State of California Payroll Taxes - March		\$96.48			online	
			<b>\$96.48</b>			
Federal Government Payroll Taxes - March		\$570.42			online	
			<b>\$570.42</b>			
ADP - Period Ending 2/28/25	684390618	\$132.25			online	
			<b>\$132.25</b>			
T-Mobile		\$78.54			online	
			<b>\$78.54</b>			
Comcast		\$150.92			online	
			<b>\$150.92</b>			
PG&E		\$3,884.60			online	
			<b>\$3,884.60</b>			
Visa		\$751.02			online	
			<b>\$751.02</b>			
State Compensation Insurance Fund	1002651210	\$529.25				
			<b>\$529.25</b>			

<b>WARRANT TOTAL:</b>	<b>\$33,048.03</b>
<b>CHECKING TOTAL:</b>	<b>\$8,085.80</b>
<b>TOTAL BILLS PAID</b>	<b>\$41,133.83</b>



# ITEM 5

**RECLAMATION DISTRICT 1614**  
**FINANCIAL REPORT MEETING MAY 2025 MEETING**  
**% OF FISCAL YEAR ELAPSED THROUGH END OF APRIL - 83.3%**

Budget Item	Budget Amount	Expended MTD	Expended YTD	% YTD
<b>GENERAL FUND</b>				
<b>Administrative</b>				
Annual Audit	\$ 8,000.00	\$0.00	\$7,965.00	99.56%
Public Communication & Noticing	10,000.00	\$0.00	4,779.07	47.79%
Election Expense	30,000.00	\$0.00	0.00	0.00%
Superintendent	50,000.00	\$2,438.99	24,452.21	48.90%
Secretary	16,000.00	\$1,865.50	16,936.26	105.85%
Workers' Compensation	3,000.00	\$0.00	1,617.98	53.93%
Trustee Fees	4,000.00	\$200.00	2,050.00	51.25%
County Assessment Administration	8,000.00	\$0.00	4,534.87	56.69%
General Assessment Administration (Engineers)	12,000.00	\$0.00	7,926.09	66.05%
Office Supplies	1,500.00	\$377.22	1,212.31	80.82%
Communication (phones, radios, etc.)	3,000.00	\$312.87	2,544.16	84.81%
Education/Memberships	3,000.00	\$0.00	1,582.00	52.73%
Non Management Staff	5,000.00	\$0.00	0.00	0.00%
LOMR	50,000.00	<u>\$0.00</u>	<u>2362.50</u>	<u>4.73%</u>
<b>TOTAL</b>	<b>\$203,500.00</b>	<b>\$5,194.58</b>	<b>\$77,962.45</b>	<b>38.31%</b>
<b>Consultants</b>				
General Engineering	\$ 30,000.00	\$4,618.15	\$44,562.52	148.54%
General Legal	30,000.00	<u>\$1,691.94</u>	<u>43,424.11</u>	<u>144.75%</u>
<b>TOTAL</b>	<b>\$ 60,000.00</b>	<b>\$6,310.09</b>	<b>\$87,986.63</b>	<b>146.64%</b>
<b>Property &amp; Equipment</b>				
Operation & Maintenance	\$ 3,000.00	\$0.00	\$0.00	0.00%
District Vehicle Expenses	3,500.00	\$253.77	2,077.78	59.37%
Acquisitions	0.00	\$0.00	0.00	0.00%
Flood Fight Supplies	5,000.00	<u>\$0.00</u>	<u>0.00</u>	<u>0.00%</u>
<b>TOTAL</b>	<b>\$ 11,500.00</b>	<b>\$253.77</b>	<b>\$2,077.78</b>	<b>18.07%</b>
<b>Other</b>				
Insurance	\$ 19,500.00	<u>\$0.00</u>	\$22,831.31	<u>117.08%</u>
<b>TOTAL</b>	<b>\$ 19,500.00</b>	<b>\$0.00</b>	<b>\$22,831.31</b>	<b>117.08%</b>
<b>TOTAL GENERAL FUND</b>	<b>\$ 294,500.00</b>	<b>\$ 11,758.44</b>	<b>\$ 190,858.17</b>	
<b>RECURRING EXPENSES</b>				
<b>Levee</b>				
General Maintenance	\$ 15,000.00	\$971.00	6,496.33	43.31%
Engineering	25,000.00	\$1,247.75	15,594.35	62.38%
Riprap and Levee Repair	780,000.00	\$423.50	851,191.70	109.13%
Specific Project Engineering	25,000.00	\$0.00	5,301.17	21.20%
Storm Emergency	25,000.00	<u>\$0.00</u>	<u>5,046.50</u>	<u>20.19%</u>
<b>TOTAL</b>	<b>\$ 870,000.00</b>	<b>\$2,642.25</b>	<b>\$881,439.55</b>	<b>101.31%</b>
<b>Drainage</b>				
Electricity	\$ 35,000.00	\$2,710.56	\$27,954.39	79.87%
Sump Clearing	15,000.00	\$0.00	15,487.00	103.25%
Plant O&M	65,000.00	\$1,842.75	50,825.16	78.19%
Pest Control	3,000.00	\$220.00	2,288.98	76.30%
Engineering	10,000.00	<u>\$0.00</u>	<u>\$2,762.68</u>	<u>27.63%</u>
<b>TOTAL</b>	<b>\$ 128,000.00</b>	<b>\$4,773.31</b>	<b>\$99,318.21</b>	<b>77.59%</b>
<b>TOTAL RECURRING EXPENSES</b>	<b>\$ 998,000.00</b>	<b>\$ 7,415.56</b>	<b>\$ 980,757.76</b>	
<b>TOTAL EXPENSE BUDGET</b>	<b>\$ 1,292,500.00</b>	<b>\$ 19,174.00</b>	<b>\$ 1,171,615.93</b>	

**INCOME****Anticipated**

Assessment - Existing	\$ 350,000.00	\$1,244.44	\$176,990.69	50.57%
Assessment - Wisconsin	97,090.00	\$0.00	\$28,139.07	28.98%
Interest	88,000.00	\$0.00	\$70,846.00	80.51%
Property Tax	195,000.00	\$0.00	\$114,091.43	58.51%
Subvention Reimbursement	425,000.00	\$0.00	\$0.00	0.00%
2019-2020 DWR 5-Year Plan	0.00	\$0.00	\$0.00	0.00%
Delta Grant II - Flood Fight Supplies	0.00	\$0.00	\$0.00	0.00%
<b>TOTAL</b>	<b>\$ 1,155,090.00</b>	<b>\$1,244.44</b>	<b>\$390,067.19</b>	<b>33.77%</b>

**TOTAL NET INCOME (LOSS)** **\$ (137,410.00)**

O&M Fund Balance (as of May 13, 2025) 1,562,523.80

Wisconsin Fund Balance (as of May 13, 2025 ) 243,512.48

Proposed Expenses 19,174.00

**TOTAL CASH** **\$ 1,786,862.28**

Checking Account Balance (as of May 13, 2025) 24,859.48

**TOTAL CASH ON HAND** **\$ 1,811,721.76**

# ITEM 6

Dominick Gulli, President  
Kevin Kauffman, Trustee  
Christian Gaines, Trustee

**RECLAMATION DISTRICT NO. 1614  
SMITH TRACT**

Andrew J. Pinasco, Counsel  
Rhonda L. Olmo, Secretary  
Christopher H. Neudeck, Engineer  
Abel Palacio, Superintendent

**BOARD OF TRUSTEES MEETING**

**MONDAY, MAY 19, 2025**

**2:00 PM**

**I. LEVEE MAINTENANCE PROJECT – FY 2024-2025**

- A. No bids received for the levee restoration along SJ River at Stockton Golf and Country Club. Seek the Board of Trustees authority to negotiate with a contractor to complete the work.

***EXHIBIT A: Restoration Plan***

- B. Review upcoming levee restoration along Smith Canal and the general interest of landowners to have rock slope protection placed upon their lots.

**II. CAL OES PUBLIC ASSISTANCE APPROVAL FOR DR/FMAG/CDA # 4683**

- A. Review District's resubmittal to State of California Office of Emergency Service (OES).

***EXHIBIT B: Email correspondence from KSN Inc. dated 5/12/25 explaining current status.***

**III. STAFF GAUGE INSTALLATION PROJECT**

- A. Review the progress of the staff gauge installation up and down Smith Canal.
- a) Staff Gauge No 1.: Located adjacent to the entry gate at the end of Moreing Drive, (Smith Canal Side) staff gauge 4-6' off WSS
  - b) Staff Gauge No 2.: Location is Buena Vista pump station, staff gauge to be mounted to pump station discharge pipe and this location will include a pressure transducer for digital read out through alarm agent system.
  - c) Staff Gauge No 3.: Location is American Legion Park at the end of Smith Canal on the north side adjacent to the city own pump station. Staff gauge is to be located roughly 6 feet from the water's edge near the pump station discharge.
  - d) Staff Gauge No 4.: Location adjacent to the entry gate at end of Moreing Drive (Atherton Cove Side)
  - e) KSN Inc 's field crew out set Bench Marks's at Staff Gauge sites on Wednesday April 2<sup>nd</sup>, to be used by Dino and Son Excavating as a reference

for the installation of the staff gauge frames. Dino and Son Excavating is scheduled to install gauge frames and backer boards May 29<sup>th</sup> and 30<sup>th</sup> as well as install the conduit for Buena Vista Pump Station. KSN will purchase fiberglass staff gauges. Abel has ordered and received pressure transducer and digital read out. Once the frames and we KSN receive the porcelain staff gauges the surveyors will work with Abel to install them via the district boat or through KSN's small Klamath boat.

***EXHIBIT C: Base Map with Staff Gauge Locations depicted***

# EXHIBIT A

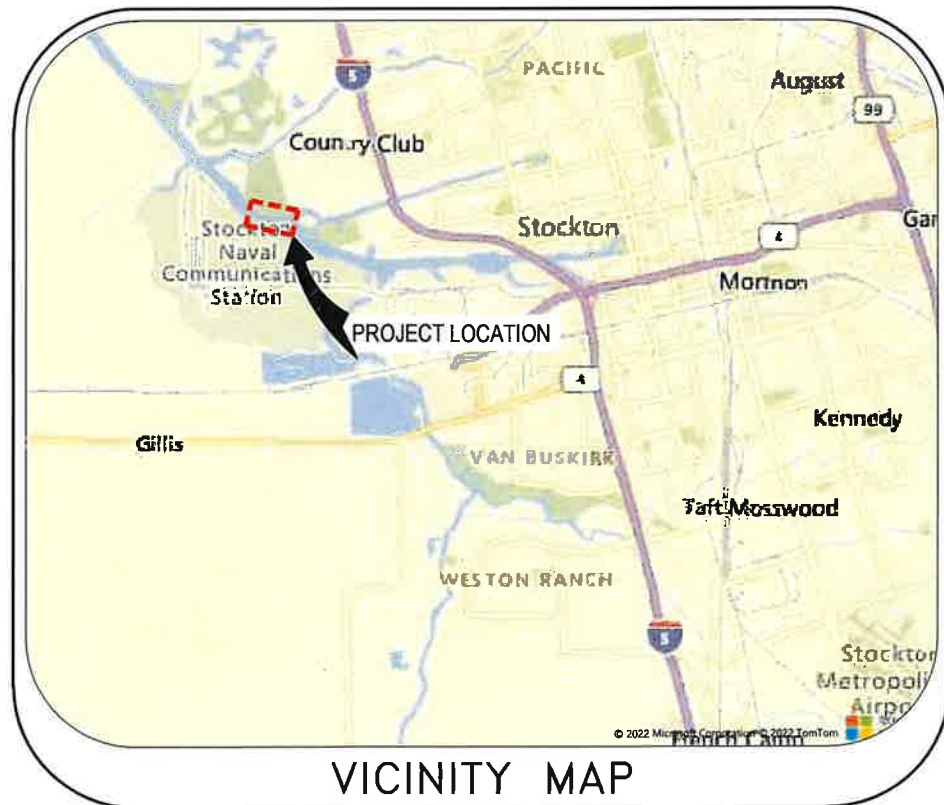
# SMITH TRACT

## STOCKTON, CALIFORNIA

# LEVEE MAINTENANCE PROJECT

## FY 2024/2025

## PHASE 2 - POST-CONSTRUCTION SITE RESTORATION



VICINITY MAP

DWG NO.	SHEET NO.	DESCRIPTION
<u>GENERAL:</u>		
G-001	1	TITLE SHEET
<u>CIVIL:</u>		
CI101 to CI103	2 to 4	IRRIGATION RECONNECTION
CS101 to CS103	5 to 7	GROUND SURFACE RESTORE

## SHEET INDEX




## PROJECT SITE MAP



SUBMITTAL	
%	Date

[illegible]

DESIGN BY	DRAWING SCALE  N.T.S.
DRAWN BY	
CHECK BY	
HORIZONTAL DATUM CCS83, ZONE 3	ORIGINAL DRAWING SCALE
VERTICAL DATUM NAVD88	<div style="display: flex; justify-content: space-between; align-items: center;"> <span>0</span> <span><math>\frac{1}{2}</math>"</span> <span>1"</span> </div> 



**KJELSEN  
SINNOCK  
NEUDECK**  
CIVIL ENGINEERS & LAND SURVEYORS  
[www.ksninc.com](http://www.ksninc.com)

711 N. Pershing Avenue  
Stockton, CA 95203  
209-946-0268

1550 Harbor Blvd., Suite 212  
West Sacramento, CA 95691  
916-403-5900

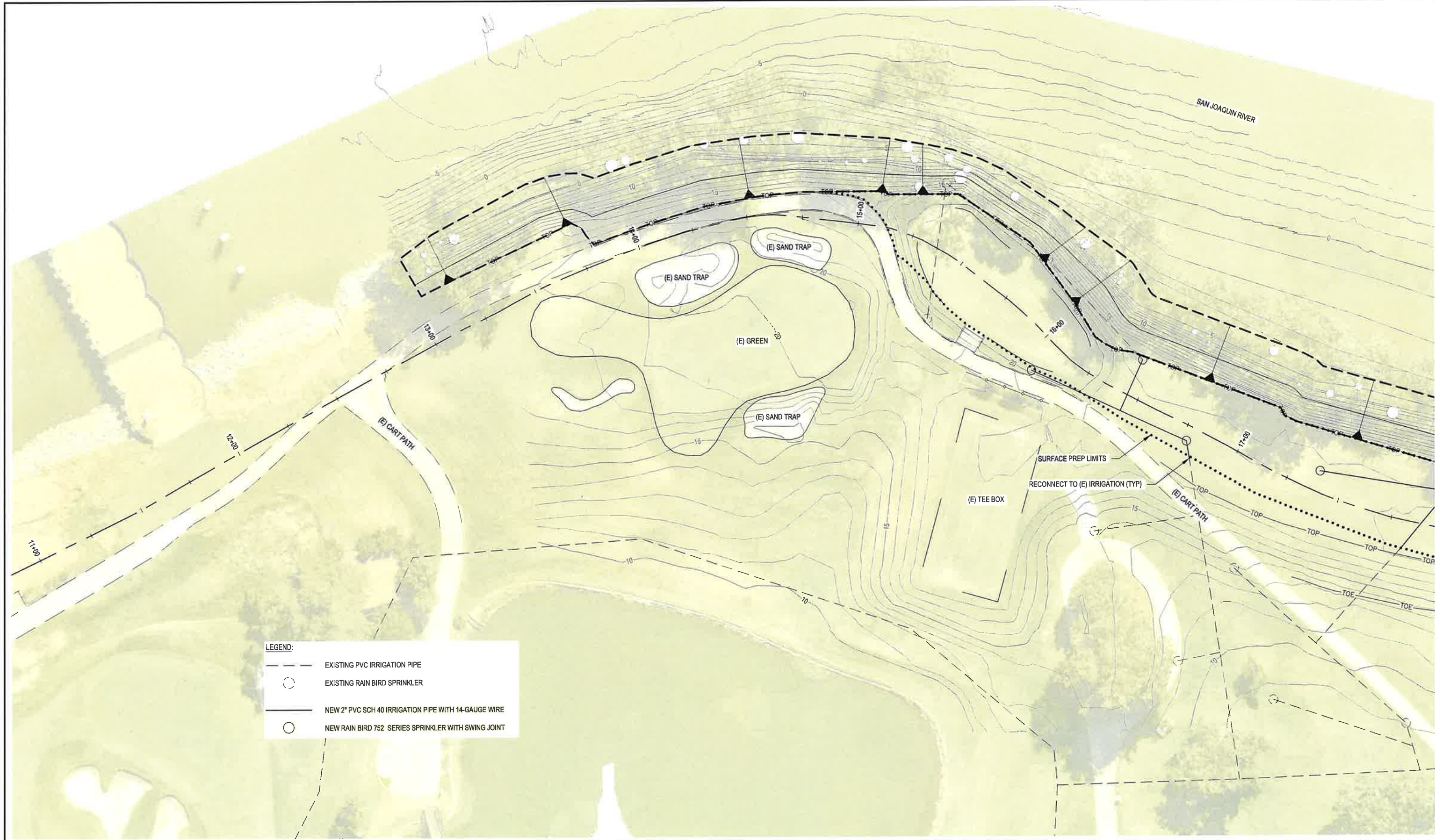
RECLAMATION DISTRICT NO. 1614 LEVEE MAINTENANCE PROJECT - FY 2024/2025 - PHASE 2 STOCKTON, CALIFORNIA	D S
---	--------

# TITLE SHEET

2	DATE APRIL 21, 2025
	SHEET IDENTIFICATION <b>G-001</b>
0	SHEET 1 OF 7 KSN PROJECT FILE NO. 0806-0670-25




FILE SPEC: P:\0806\_Smith\_Tract\0670\_Annual\_Maint\_Bid\_Projects\FY\_2024-2025\08\_Civil\400\_Plans\020\_CAD\Sheets\Restore\_CI101.dwg  
PLOT DATE: Apr 21, 2025 - 9:24am

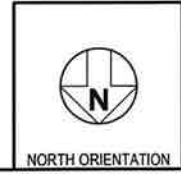


LEGEND:

- EXISTING PVC IRRIGATION PIPE
- EXISTING RAIN BIRD SPRINKLER
- NEW 2" PVC SCH 40 IRRIGATION PIPE WITH 14-GAUGE WIRE
- NEW RAIN BIRD 752 SERIES SPRINKLER WITH SWING JOINT



SUBMITTAL	
%	Date




NORTH ORIENTATION

NO.	DESCRIPTION	DATE	APPR.

DESIGN BY
DRAWN BY
CHECK BY
HORIZONTAL DATUM CCS83, ZONE 3
VERTICAL DATUM NAVD88

DRAWING SCALE
1" = 20'
ORIGINAL DRAWING SCALE
0 1/2" 1"



711 N. Pershing Avenue  
Stockton, CA 95203  
209-946-0268  
1550 Harbor Blvd., Suite 212  
West Sacramento, CA 95691  
916-403-5900  
www.ksninc.com

RECLAMATION DISTRICT NO. 1614  
LEVEE MAINTENANCE PROJECT - FY 2024/2025 - PHASE 2  
STOCKTON, CALIFORNIA

IRRIGATION RECONNECTION  
STA 13+04 TO STA 17+50

21

DATE  
APRIL 21, 2025

SHEET IDENTIFICATION  
**CI101**

SHEET 2 OF 7  
KSN PROJECT FILE NO.  
0806-0670-25



SAN JOAQUIN RIVER

LEGEND:

- EXISTING PVC IRRIGATION PIPE
- EXISTING RAIN BIRD SPRINKLER
- NEW 2" PVC SCH 40 IRRIGATION PIPE WITH 14-GAUGE WIRE
- NEW RAIN BIRD 752 SERIES SPRINKLER WITH SWING JOINT

RECONNECT TO (E) IRRIGATION (TYP)

SURFACE PREP LIMITS



SUBMITTAL	
%	Date



NO.	DESCRIPTION	DATE	APPR.

DESIGN BY	
DRAWN BY	
CHECK BY	
HORIZONTAL DATUM	CCS83, ZONE 3
VERTICAL DATUM	NAVD88

DRAWING SCALE	1" = 20'
ORIGINAL DRAWING SCALE	0 1/2" 1"



KJELSEN  
SINNOCK  
NEUDECK  
INC.  
CIVIL ENGINEERS & LAND SURVEYORS  
www.ksninc.com

711 N. Pershing Avenue  
Stockton, CA 95203  
209-946-0268  
1550 Harbor Blvd., Suite 212  
West Sacramento, CA 95691  
916-403-5900

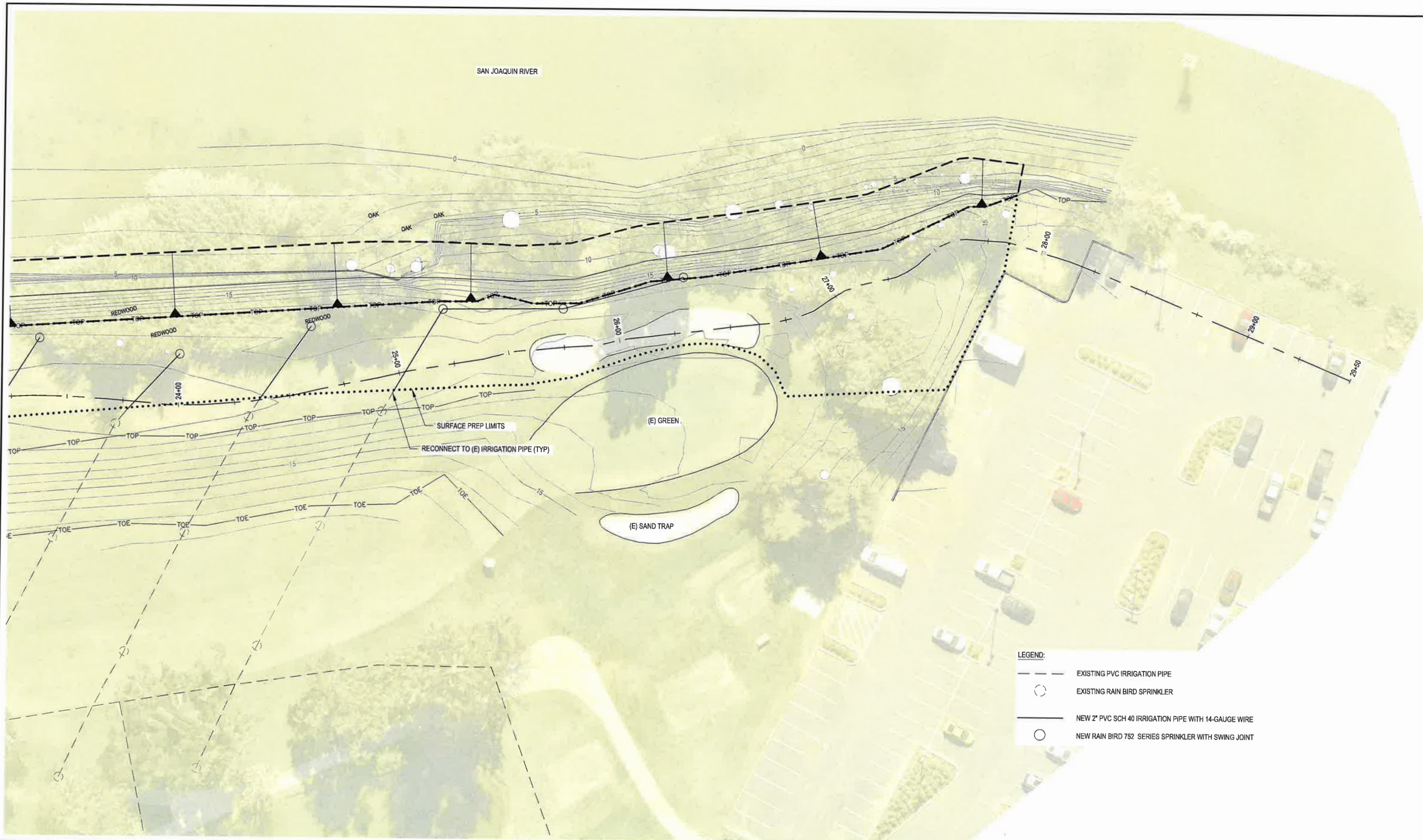
RECLAMATION DISTRICT NO. 1614  
LEVEE MAINTENANCE PROJECT - FY 2024/2025 - PHASE 2  
STOCKTON, CALIFORNIA

IRRIGATION RECONNECTION  
STA 17+50 TO STA 23+50

DATE	APRIL 21, 2025
SHEET IDENTIFICATION	C1102
SHEET 3 OF 7	
KSN PROJECT FILE NO.	0806-0670-25



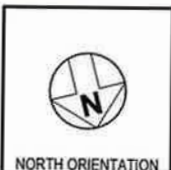
FILE: SPEC: P:\0806\_Smith Tract\0870\_Annual\_Maint\_Bid\_Projects\FY\_2024-2025\08\_Civil\400\_Plans\020\_CAD\Sheets\Restore\_C1101.dwg  
PLOT DATE: Apr 21, 2025 - 9:25am



- LEGEND:
- EXISTING PVC IRRIGATION PIPE
  - EXISTING RAIN BIRD SPRINKLER
  - NEW 2" PVC SCH 40 IRRIGATION PIPE WITH 14-GAUGE WIRE
  - NEW RAIN BIRD 752 SERIES SPRINKLER WITH SWING JOINT



SUBMITTAL	
%	Date



NO.	DESCRIPTION	DATE	APPR.

DESIGN BY	
DRAWN BY	
CHECK BY	
HORIZONTAL DATUM CCS83, ZONE 3	
VERTICAL DATUM NAVD88	

DRAWING SCALE	1" = 20'
ORIGINAL DRAWING SCALE	0 1/2" 1"



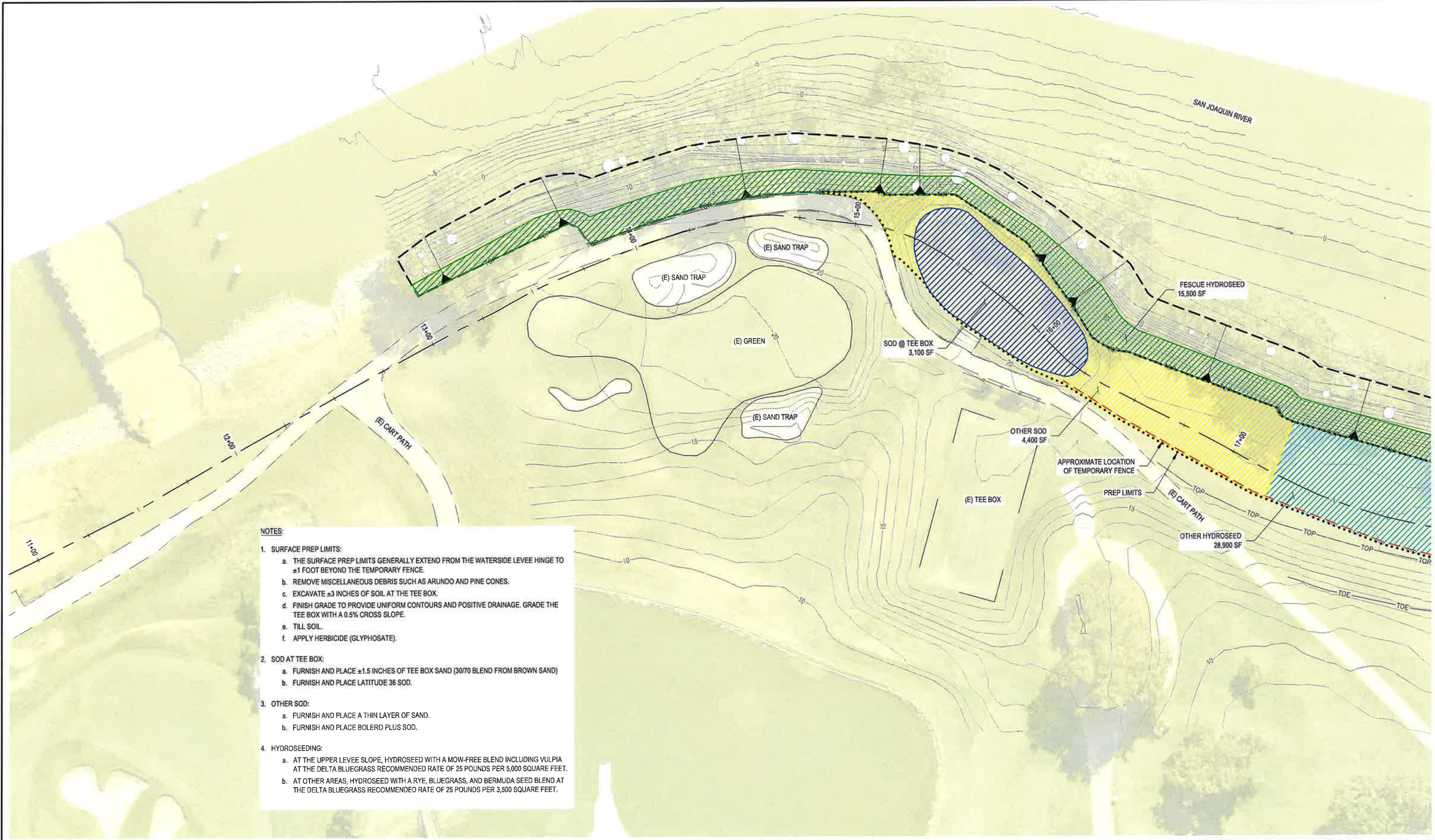
711 N. Pershing Avenue  
Stockton, CA 95203  
209-946-0268  
1550 Harbor Blvd., Suite 212  
West Sacramento, CA 95691  
916-403-5900

RECLAMATION DISTRICT NO. 1614  
LEVEE MAINTENANCE PROJECT - FY 2024/2025 - PHASE 2  
STOCKTON, CALIFORNIA  
  
IRRIGATION RECONNECTION  
STA 23+50 TO STA 27+84

DATE  
APRIL 21, 2025  
SHEET IDENTIFICATION  
**C1103**  
SHEET 4 OF 7  
KSN PROJECT FILE NO.  
0806-0670-25



FILE SPEC: P:\0806\_Smith\_Track\0670\_Annual\_Maint\_Bid\_Projects\FY\_2024-2025\08\_Civil\400\_Plans\020\_CAD\_Sheets\Restore\_CS101.dwg  
PLOT DATE: Apr 21, 2025 - 9:27am



- NOTES:**
- SURFACE PREP LIMITS:**
    - THE SURFACE PREP LIMITS GENERALLY EXTEND FROM THE WATERSIDE LEVEE HINGE TO ±1 FOOT BEYOND THE TEMPORARY FENCE.
    - REMOVE MISCELLANEOUS DEBRIS SUCH AS ARUNDO AND PINE CONES.
    - EXCAVATE ±3 INCHES OF SOIL AT THE TEE BOX.
    - FINISH GRADE TO PROVIDE UNIFORM CONTOURS AND POSITIVE DRAINAGE. GRADE THE TEE BOX WITH A 0.5% CROSS SLOPE.
    - TILL SOIL.
    - APPLY HERBICIDE (GLYPHOSATE).
  - SOD AT TEE BOX:**
    - FURNISH AND PLACE ±1.5 INCHES OF TEE BOX SAND (30/70 BLEND FROM BROWN SAND)
    - FURNISH AND PLACE LATITUDE 36 SOD.
  - OTHER SOD:**
    - FURNISH AND PLACE A THIN LAYER OF SAND.
    - FURNISH AND PLACE BOLERO PLUS SOD.
  - HYDROSEEDING:**
    - AT THE UPPER LEVEE SLOPE, HYDROSEED WITH A MOW-FREE BLEND INCLUDING VULPIA AT THE DELTA BLUEGRASS RECOMMENDED RATE OF 25 POUNDS PER 5,000 SQUARE FEET.
    - AT OTHER AREAS, HYDROSEED WITH A RYE, BLUEGRASS, AND BERMUDA SEED BLEND AT THE DELTA BLUEGRASS RECOMMENDED RATE OF 25 POUNDS PER 3,500 SQUARE FEET.



SUBMITTAL	
%	Date



NO.	DESCRIPTION	DATE	APPR.

DESIGN BY	
DRAWN BY	
CHECK BY	
HORIZONTAL DATUM	CCS83, ZONE 3
VERTICAL DATUM	NAVD88

DRAWING SCALE	1" = 20'
ORIGINAL DRAWING SCALE	0 1/2" 1"

**KJELDSEN SINNOCK NEUDECK**  
CIVIL ENGINEERS & LAND SURVEYORS  
www.ksninc.com

711 N. Pershing Avenue  
Stockton, CA 95203  
209-946-0268  
1550 Harbor Blvd., Suite 212  
West Sacramento, CA 95691  
916-403-5900

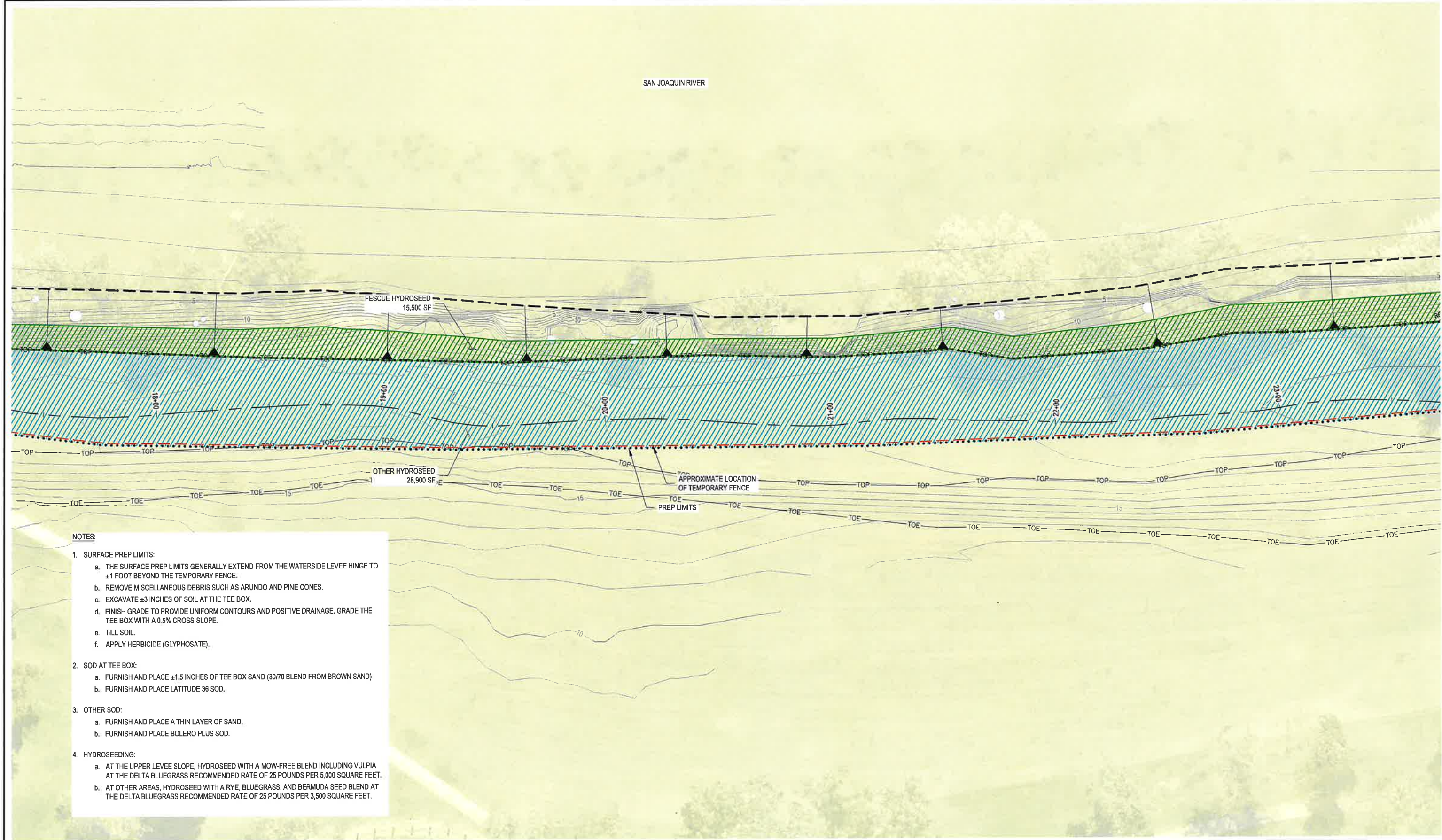
RECLAMATION DISTRICT NO. 1614  
LEVEE MAINTENANCE PROJECT - FY 2024/2025 - PHASE 2  
STOCKTON, CALIFORNIA

**GROUND SURFACE RESTORE**  
STA 13+04 TO STA 17+50

DATE: APRIL 21, 2025  
SHEET IDENTIFICATION: **CS101**  
SHEET 5 OF 7  
KSN PROJECT FILE NO. 0806-0670-25






FILE SPEC: P:\0806\_Smith\_Tract\0670\_Annual\_Main\Bld\_Proj\0670\_Annual\_Main\Bld\_Proj\0670\_Annual\_Main\020\_CAD\_Sheets\Restore\_CS101.dwg  
PLOT DATE: Apr 21, 2025 - 9:27am



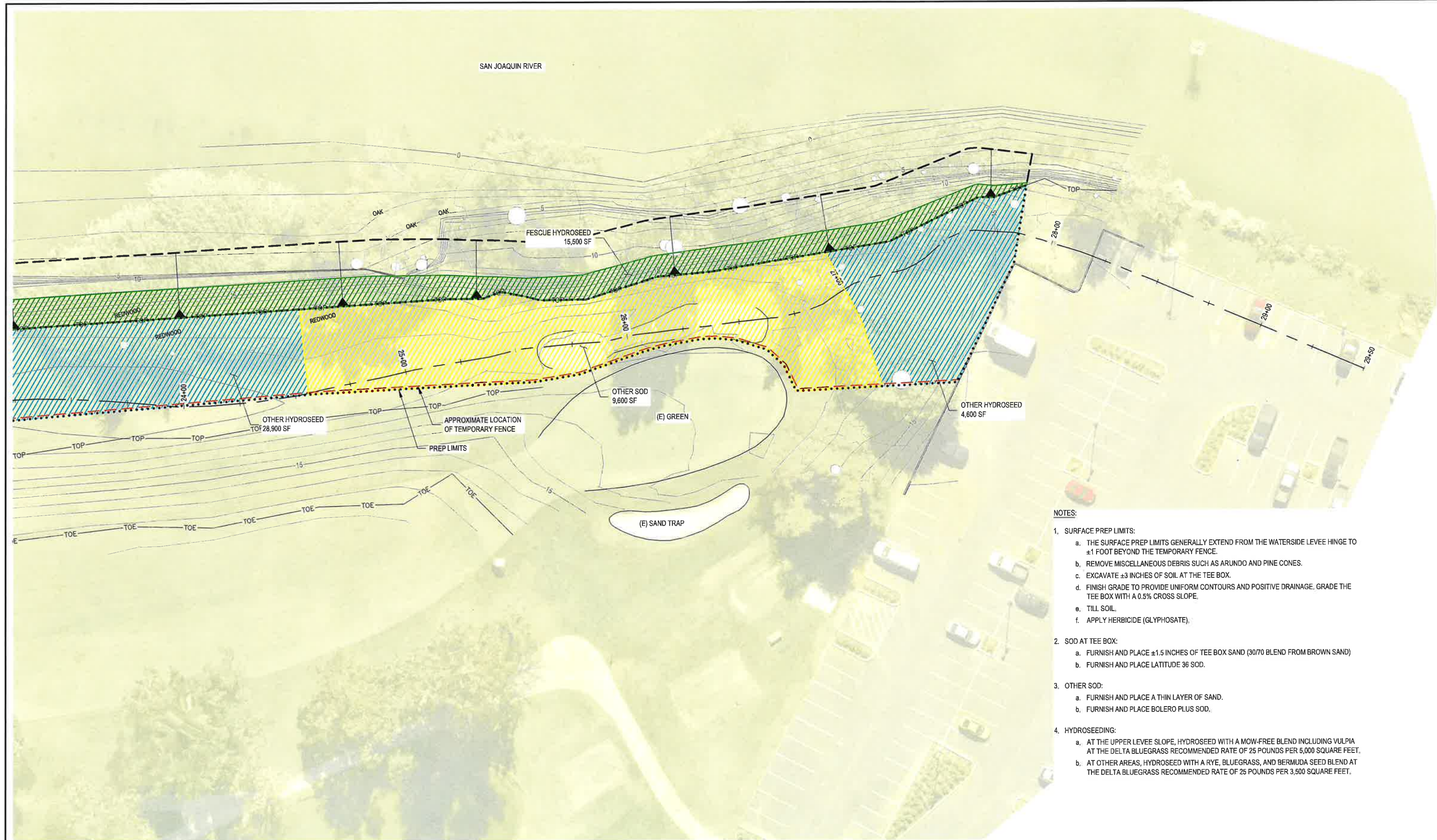
NOTES:

- SURFACE PREP LIMITS:
  - THE SURFACE PREP LIMITS GENERALLY EXTEND FROM THE WATERSIDE LEVEE HINGE TO  $\pm 1$  FOOT BEYOND THE TEMPORARY FENCE.
  - REMOVE MISCELLANEOUS DEBRIS SUCH AS ARUNDO AND PINE CONES.
  - EXCAVATE  $\pm 3$  INCHES OF SOIL AT THE TEE BOX.
  - FINISH GRADE TO PROVIDE UNIFORM CONTOURS AND POSITIVE DRAINAGE. GRADE THE TEE BOX WITH A 0.5% CROSS SLOPE.
  - TILL SOIL.
  - APPLY HERBICIDE (GLYPHOSATE).
- SOD AT TEE BOX:
  - FURNISH AND PLACE  $\pm 1.5$  INCHES OF TEE BOX SAND (30/70 BLEND FROM BROWN SAND)
  - FURNISH AND PLACE LATITUDE 36 SOD.
- OTHER SOD:
  - FURNISH AND PLACE A THIN LAYER OF SAND.
  - FURNISH AND PLACE BOLERO PLUS SOD.
- HYDROSEEDING:
  - AT THE UPPER LEVEE SLOPE, HYDROSEED WITH A MOW-FREE BLEND INCLUDING VULPIA AT THE DELTA BLUEGRASS RECOMMENDED RATE OF 25 POUNDS PER 5,000 SQUARE FEET.
  - AT OTHER AREAS, HYDROSEED WITH A RYE, BLUEGRASS, AND BERMUDA SEED BLEND AT THE DELTA BLUEGRASS RECOMMENDED RATE OF 25 POUNDS PER 3,500 SQUARE FEET.


	SUBMITTAL			<table><thead><tr><th>NO.</th><th>DESCRIPTION</th><th>DATE</th><th>APPR.</th></tr></thead><tbody><tr><td> </td><td> </td><td> </td><td> </td></tr><tr><td> </td><td> </td><td> </td><td> </td></tr><tr><td> </td><td> </td><td> </td><td> </td></tr><tr><td> </td><td> </td><td> </td><td> </td></tr><tr><td> </td><td> </td><td> </td><td> </td></tr></tbody></table>	NO.	DESCRIPTION	DATE	APPR.																					<table><tr><td>DESIGN BY</td><td> </td></tr><tr><td>DRAWN BY</td><td> </td></tr><tr><td>CHECK BY</td><td> </td></tr><tr><td>HORIZONTAL DATUM</td><td>CCS83, ZONE 3</td></tr><tr><td>VERTICAL DATUM</td><td>NAVD88</td></tr></table>	DESIGN BY		DRAWN BY		CHECK BY		HORIZONTAL DATUM	CCS83, ZONE 3	VERTICAL DATUM	NAVD88	<table><tr><td>DRAWING SCALE</td><td>1" = 20'</td></tr><tr><td>ORIGINAL DRAWING SCALE</td><td>0 1/2" 1"</td></tr></table>	DRAWING SCALE	1" = 20'	ORIGINAL DRAWING SCALE	0 1/2" 1"		711 N. Pershing Avenue Stockton, CA 95203 209-946-0268 1550 Harbor Blvd., Suite 212 West Sacramento, CA 95691 916-403-5900	RECLAMATION DISTRICT NO. 1614 LEVEE MAINTENANCE PROJECT - FY 2024/2025 - PHASE 2 STOCKTON, CALIFORNIA	DATE APRIL 21, 2025 SHEET IDENTIFICATION <b>CS102</b> SHEET 6 OF 7 KSN PROJECT FILE NO. 0806-0670-25
	NO.	DESCRIPTION			DATE	APPR.																																										
DESIGN BY																																																
DRAWN BY																																																
CHECK BY																																																
HORIZONTAL DATUM	CCS83, ZONE 3																																															
VERTICAL DATUM	NAVD88																																															
DRAWING SCALE	1" = 20'																																															
ORIGINAL DRAWING SCALE	0 1/2" 1"																																															
				GROUND SURFACE RESTORE STA 17+50 TO STA 23+50	25																																											



FILE SPEC: P:\0806\_Smith Tract\0670\_Annual\_Maint\_Bid\_P\Projects\FY\_2024-2025\08\_Civil\400\_Plans\020\_CAD\_Sheets\Restore\_CS101.dwg  
PLOT DATE: Apr 21, 2025 - 9:28am




- NOTES:
- SURFACE PREP LIMITS:
    - THE SURFACE PREP LIMITS GENERALLY EXTEND FROM THE WATERSIDE LEVEE HINGE TO  $\pm 1$  FOOT BEYOND THE TEMPORARY FENCE.
    - REMOVE MISCELLANEOUS DEBRIS SUCH AS ARUNDO AND PINE CONES.
    - EXCAVATE  $\pm 3$  INCHES OF SOIL AT THE TEE BOX.
    - FINISH GRADE TO PROVIDE UNIFORM CONTOURS AND POSITIVE DRAINAGE. GRADE THE TEE BOX WITH A 0.5% CROSS SLOPE.
    - TILL SOIL.
    - APPLY HERBICIDE (GLYPHOSATE).
  - SOD AT TEE BOX:
    - FURNISH AND PLACE  $\pm 1.5$  INCHES OF TEE BOX SAND (30/70 BLEND FROM BROWN SAND)
    - FURNISH AND PLACE LATITUDE 36 SOD.
  - OTHER SOD:
    - FURNISH AND PLACE A THIN LAYER OF SAND.
    - FURNISH AND PLACE BOLERO PLUS SOD.
  - HYDROSEEDING:
    - AT THE UPPER LEVEE SLOPE, HYDROSEED WITH A MOW-FREE BLEND INCLUDING VULPIA AT THE DELTA BLUEGRASS RECOMMENDED RATE OF 25 POUNDS PER 5,000 SQUARE FEET.
    - AT OTHER AREAS, HYDROSEED WITH A RYE, BLUEGRASS, AND BERMUDA SEED BLEND AT THE DELTA BLUEGRASS RECOMMENDED RATE OF 25 POUNDS PER 3,500 SQUARE FEET.




Know what's below.  
Call before you dig.

SUBMITTAL	
%	Date



NORTH ORIENTATION

NO.	DESCRIPTION	DATE	APPR.

DESIGN BY	 <p>KJELSEN SINNOCK NEUDECK CIVIL ENGINEERS &amp; LAND SURVEYORS www.ksninc.com</p>
DRAWN BY	
CHECK BY	

HORIZONTAL DATUM CCS83, ZONE 3
VERTICAL DATUM NAVD88

DRAWING SCALE  
1" = 20'

ORIGINAL DRAWING SCALE  
0 1/2" 1"

711 N. Pershing Avenue  
Stockton, CA 95203  
209-946-0268

1550 Harbor Blvd., Suite 212  
West Sacramento, CA 95691  
916-403-5900

RECLAMATION DISTRICT NO. 1614  
LEVEE MAINTENANCE PROJECT - FY 2024/2025 - PHASE 2  
STOCKTON, CALIFORNIA

GROUND SURFACE RESTORE  
STA 23+50 TO STA 27+84

DATE  
APRIL 21, 2025

SHEET IDENTIFICATION  
**CS103**  
SHEET 7 OF 7

KSN PROJECT FILE NO.  
0806-0670-25

26

# EXHIBIT B



Chris,

Completed forms were submitted this morning. I will get scans to Rhonda and Andy P.

We received the request for these forms end of March and got them in front of the District for their April board meeting. However, one of the forms was not signed so we decided to wait until the May meeting for signature. Due to the request from CalOES, we had Kevin come in last week to sign the form so we can get submitted ASAP.

We will need to have the District provide the SAM.gov information since that is something we don't have. @Elizabeth confirm.

Thanks,  
MSK

**From:** Christopher H. Neudeck <cneudeck@ksninc.com>  
**Sent:** Monday, May 12, 2025 8:25 AM  
**To:** Elizabeth A. Ramos <eramos@ksninc.com>; Muhammad Khan <mkhan@ksninc.com>  
**Subject:** FW: Cal OES - Reclamation District 1614, Smith Tract - Missing Information for DR-4683

EAR/MSK,

Can you please give me a status update on handling this matter by Wednesday of this week. I have Bd mtg next on this matter.

**From:** Olmo, Rhonda L. <rolmo@neumiller.com>  
**Sent:** Friday, May 2, 2025 1:07 PM  
**To:** Christopher H. Neudeck <cneudeck@ksninc.com>  
**Cc:** Pinasco, Andy J. <apinasco@neumiller.com>  
**Subject:** FW: Cal OES - Reclamation District 1614, Smith Tract - Missing Information for DR-4683

28



Rhonda

**From:** Ewaldt, Jeff (Contractor)@CalOES <[ContractorJeff.Ewaldt@CalOES.ca.gov](mailto:ContractorJeff.Ewaldt@CalOES.ca.gov)>

**Sent:** Thursday, May 1, 2025 2:42 PM

**To:** Olmo, Rhonda L. <[rolmo@neumiller.com](mailto:rolmo@neumiller.com)>; [greenmountaindom@hotmail.com](mailto:greenmountaindom@hotmail.com)

**Cc:** Budetti, TJ (Contractor)@CalOES.ca.gov <[ContractorTJ.Budetti@CalOES.ca.gov](mailto:ContractorTJ.Budetti@CalOES.ca.gov)>; Lynch, Isabel@CalOES <[Isabel.Lynch@CalOES.ca.gov](mailto:Isabel.Lynch@CalOES.ca.gov)>

Assistance Financial Processing <[RecoveryPayments@caloes.ca.gov](mailto:RecoveryPayments@caloes.ca.gov)>

**Subject:** Cal OES - Reclamation District 1614, Smith Tract - Missing Information for DR-4683

Dear Rhonda and Dominick:

The California Governor's Office of Emergency Services (Cal OES) has received and reviewed your Public Assistance DR/FMAG/CDAA # 4683. However, we have placed your account on hold for the following reason(s):

- We need a Designation of Applicant's Agent Resolution for Non-State Agencies (Cal OES 130). Your organization must complete the Cal OES 130 resolution form or draft a resolution of its own to designate its Authorized Agents. A drafted resolution should be submitted to the Cal OES 130 form, and any Authorized Agent resolution must be voted on and approved at a meeting of your organization where a quorum was present. Although it's up to your organization's preference, FPU recommends designating Authorized Agents so that authority remains with a selected position rather than a specific individual.
- We need an AA Names form. This form is used to list the names and email addresses of the individuals who hold title on your organization's resolution. This form will also allow you to designate any approved contacts whom you may need for communication. Please have a designated Authorized Agent complete the document using the title exactly as it appears on the Cal OES 130.
- We need the Project Assurances for Federal Assistance (Cal OES 89). Please have a designated Authorized Agent complete the document using the title exactly as it appears on the Cal OES 130.
- We need a Federal Financial Accountability and Transparency Act (FFATA) Financial Disclosure completed using information from the preceding calendar (MM/DD/2024) year and signed by an Authorized Agent.

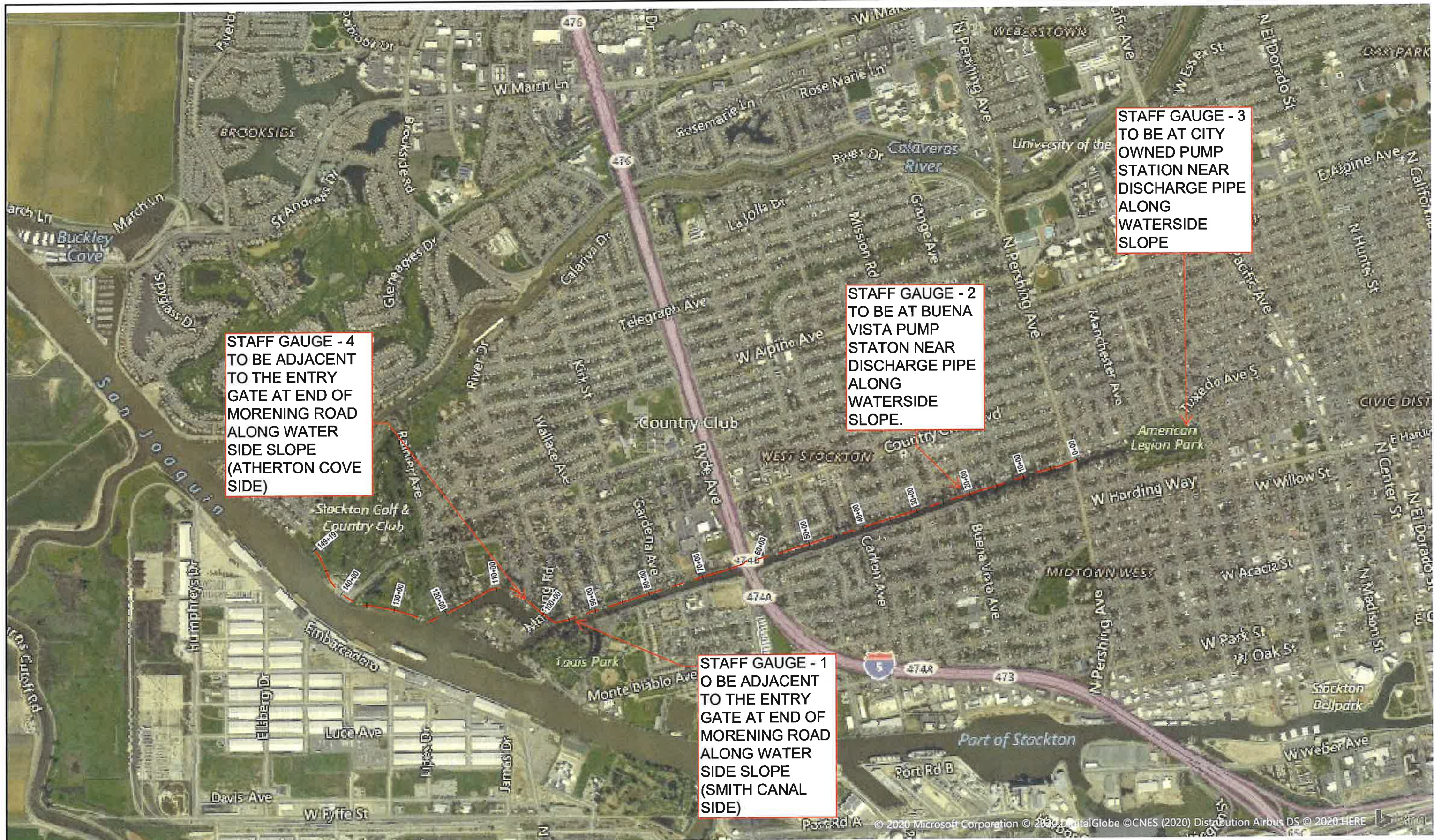
**Jeff Ewaldt, MBA**

Disaster Assistance Program Specialist (DAPS)  
California Governor's Office of Emergency Services  
10370 Peter A McCuen Blvd, Bldg. E  
Mather, CA 95655  
Mobile: (916) 926-9046  
[ContractorJeff.Ewaldt@CalOES.ca.gov](mailto:ContractorJeff.Ewaldt@CalOES.ca.gov)



# EXHIBIT C





**KJELDEN SINNOCK NEUDECK inc.**  
CIVIL ENGINEERS & LAND SURVEYORS  
www.ksninc.com

711 N. Pershing Avenue  
Stockton, CA 95203  
209-946-0268

1550 Harbor Blvd., Suite 212  
West Sacramento, CA 95691  
916-403-6900

**RECLAMATION DISTRICT NO. 1614  
SMITH TRACT**

**BASE MAP**

DRAWING SCALE 1"=800'	EXHIBIT NO. <b>1</b>
ORIGINAL DRAWING SCALE 0 1/2" 1" 3/4" 1" 1 1/4" 1 1/2" 1 3/4" 2" 2 1/2" 3" 3 1/2" 4" 4 1/2" 5" 5 1/2" 6" 6 1/2" 7" 7 1/2" 8" 8 1/2" 9" 9 1/2" 10" 11" 11 1/2" 12" 13" 14" 15" 16" 17" 18" 19" 20" 21" 22" 23" 24" 25" 26" 27" 28" 29" 30" 31" 32"	PAGE NO. <b>1</b>



# ITEM 7

## Spice, Matthew Z.

---

**From:** Omar Al-Hindi <Omar.AlHindi@sjafca.org>  
**Sent:** Wednesday, May 14, 2025 9:28 AM  
**To:** cneudeck@ksninc.com; Pinasco, Andy J.; ealmaas@ksninc.com  
**Cc:** Joe Mulligan  
**Subject:** LSJR Project Phase 'D' RD1614 ROE  
**Attachments:** Phase D\_Utility Potholing\_RD1614\_CoverLetter.pdf; RD1614 - Exhibit A & B.pdf; DACW05-8-25-0101 - RD1614 - ROE.pdf

Good morning, Chris/Andy,

The US Army Corps of Engineers is in need of a ROE for utilities potholing on the Lower San Joaquin River Phase D project. Attached is the ROE and exhibits and scope of work. They would like to get this ROE within the next two weeks. Please let us know if you need any other information to get the ROE issued. Thank you.

### Omar Al Hindi

Executive Project Manager

**San Joaquin Area Flood Control Agency**

**2800 West March Lane, Suite 200**

**Stockton, Ca 95219**

**Phone: (350) 333-1139**

**Efax: 209-451-2857**

**Mobile: 209-425-1488**

**Email: [omar.alhindi@sjafca.org](mailto:omar.alhindi@sjafca.org)**





DEPARTMENT OF THE ARMY  
U.S. ARMY CORPS OF ENGINEERS, SACRAMENTO DISTRICT  
1325 J STREET  
SACRAMENTO CA 95814-2922

May 7, 2025

CESPK-REI-S

Reclamation District 1614  
PO Box 4807  
Stockton, CA 95204

To Whom it May Concern:

The U.S. Army Corps of Engineers, in cooperation with the Central Valley Flood Protection Board, and San Joaquin Area Flood Control Agency (SJAFC), will be conducting utility pothole investigations along portions of the San Joaquin River Levees and its tributaries. The goal of the Lower San Joaquin Levee Improvement Project is to improve the existing levee system and reduce the risk of flood damage along portions of the Lower San Joaquin River near the City of Stockton. Information gathered during the investigations will be used to help determine subsurface conditions and evaluate the existing levee's flood protection capabilities. Additionally, the information gathered will aid in developing effective and efficient levee strengthening improvement designs, if needed, to increase flood protection near the City of Stockton.

The U.S. Army Corps of Engineers needs access to your property to conduct the following activities as listed on Exhibit "B" of the enclosed Right-of-Entry:

1. Surveying borehole locations: Tentative 1-2 days.
2. Utility Potholing: Tentatively 3 weeks.

According to the County Assessor's records we believe you own the following APNs property within the project area: 109-110-220, & 109-380-190, & RD 1614 Pump per 1638 O.R. 430 along the left bank of the Calaveras River near River Drive. Please review and sign our enclosed standard Right of Entry form, which will grant permission for our team to conduct surveys on your property. We will attempt to notify you at least 3-5 days prior to commencing any activities. **If the terms are acceptable, please sign and return a copy of the agreement by May 21, 2025.**

For questions regarding this real estate matter, you may contact me at (916) 268-0003 and Nicholas.A.Stauber@usace.army.mil.

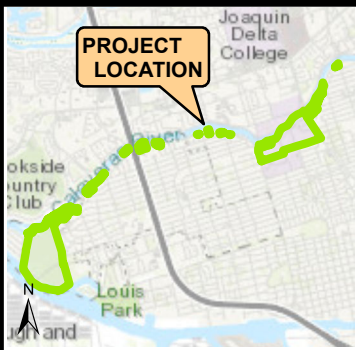
Sincerely,

A handwritten signature in black ink, appearing to read "Nick Stauber", is written over a horizontal line.

Nick Stauber  
Realty Specialist, Southern Section  
Real Estate Division



Note: Exact exploration locations in the figure are approximate and may be shifted based on access to the location or underground utilities in the field by the engineer.



**LEGEND**

EXCEPT FOR SPECIAL SYMBOLS SHOWN BELOW,  
MAP SYMBOLS ARE STANDARD IN U.S. ARMY  
FIELD MANUAL, FM 21-31, TOPOGRAPHIC SYMBOLS,  
DATED DECEMBER 1968.

 PARCEL BOUNDARY

 BORING

SAN JOAQUIN COUNTY

REAL ESTATE DIVISION

CALIFORNIA

**LOWER SAN JOAQUIN RIVER**  
**RIGHT-OF-ENTRY FOR SURVEY & EXPLORATION**



DEPARTMENT OF THE ARMY  
OFFICE OF THE SACRAMENTO DISTRICT ENGINEER  
SOUTH PACIFIC DIVISION



**EXHIBIT A**

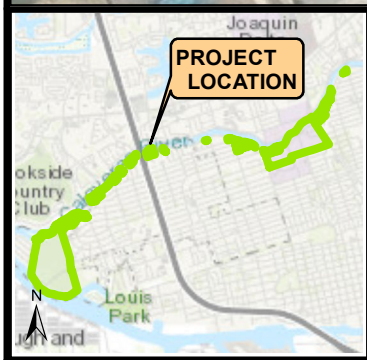
CONTRACT NO.  
DACW05-8-25-0101

SHEET 36 OF 3





Note: Utility pothole locations identified in the exhibit are approximate locations and may be shifted in the field based off access constraints and/or guidance by the property/utility owner.

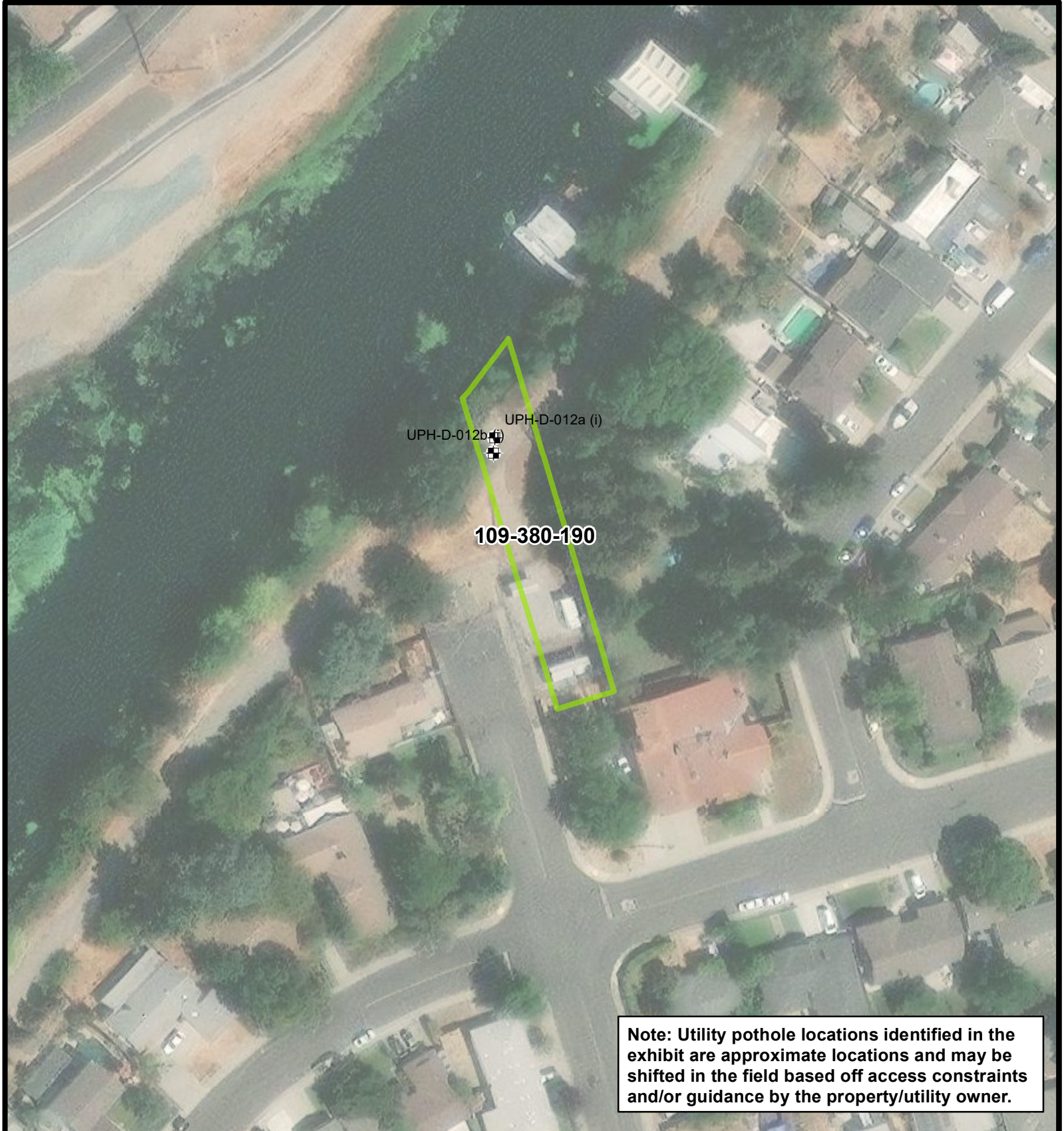


**LEGEND**  
EXCEPT FOR SPECIAL SYMBOLS SHOWN BELOW,  
MAP SYMBOLS ARE STANDARD IN U.S. ARMY  
FIELD MANUAL, FM 21-31, TOPOGRAPHIC SYMBOLS,  
DATED DECEMBER 1968.

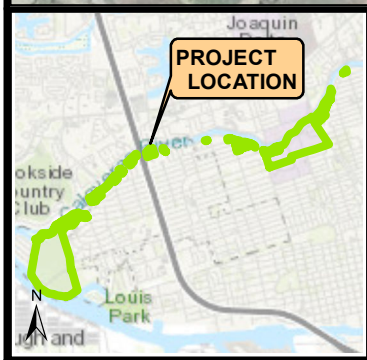
- PARCEL BOUNDARY
- BORING
- CONE PENETRATION TEST
- UTILITY POTHOLE

SAN JOAQUIN COUNTY		REAL ESTATE DIVISION		CALIFORNIA	
<b>LOWER SAN JOAQUIN RIVER</b> <b>RIGHT-OF-ENTRY FOR SURVEY &amp; EXPLORATION</b>					
		DEPARTMENT OF THE ARMY OFFICE OF THE SACRAMENTO DISTRICT ENGINEER SOUTH PACIFIC DIVISION			
<b>EXHIBIT A</b>		CONTRACT NO. DACW05-8-25-0101		SHEET <u>37</u> OF <u>1</u>	





Note: Utility pothole locations identified in the exhibit are approximate locations and may be shifted in the field based off access constraints and/or guidance by the property/utility owner.



**LEGEND**  
EXCEPT FOR SPECIAL SYMBOLS SHOWN BELOW,  
MAP SYMBOLS ARE STANDARD IN U.S. ARMY  
FIELD MANUAL, FM 21-31, TOPOGRAPHIC SYMBOLS,  
DATED DECEMBER 1968.

	PARCEL BOUNDARY
	BORING
	CONE PENETRATION TEST
	UTILITY POTHOLE

SAN JOAQUIN COUNTY		REAL ESTATE DIVISION		CALIFORNIA
<b>LOWER SAN JOAQUIN RIVER</b> <b>RIGHT-OF-ENTRY FOR SURVEY &amp; EXPLORATION</b>				
		DEPARTMENT OF THE ARMY OFFICE OF THE SACRAMENTO DISTRICT ENGINEER SOUTH PACIFIC DIVISION		
<b>EXHIBIT A</b>		CONTRACT NO. DACW05-8-25-0101	SHEET <u>36</u> OF <u>1</u>	

## **EXHIBIT B**

### **Description of Proposed Investigations**

#### **1. General**

SJAFCA is assisting the U.S Army Corps of Engineers (USACE) with the design and construction of the Lower San Joaquin River Project. The Project will need to access property to sample soil materials for the proposed improvements. In order to determine the extent of and to ultimately prepare the design for these improvements, SJAFCA and the USACE must evaluate soil conditions in the area. SJAFCA shall notify a property representative 48 hours in advance of its entry on the Property for these activities.

#### **2. Property Access**

The project team and its engineering, survey and environmental consultants will require access to private and public parcels to complete studies needed as part of the planning and design process for the project. The nature of each study is described in more detail below.

#### **3. Points of Contact**

A USACE representative, Nick Stauber or designee will work with the owner in this effort. He can be contacted directly at (916) 268-0003, or by email at [nicholas.a.stauber@usace.army.mil](mailto:nicholas.a.stauber@usace.army.mil).

#### **4. Utility Potholing**

Utility locating: GPR scanning will screen sites to identify the location of utilities.

Potholing: The subcontractor will use an air vacuum truck in an attempt to expose the utilities via an approximately 8-inch diameter pothole at each location. This process is limited to the top 10 ft-bgs. Neat cement grout with up to five percent bentonite will be used to backfill the utility potholes, in accordance with the San Joaquin County Environmental Health Department soil boring permit requirements.

#### **5. Geotech Boring Surveys**

Field Ground Surveys: Due to the need for additional precision at certain locations, crews would field survey boreholes. Field survey crews do not typically disturb agricultural or other operations.

# ITEM 9

RD 1614 Superintendent's Report  
April 2025

4/28//2025

The month of April 2025 was a relatively dry month with little rain.  
Rain totals for the month to date are .28"

**Pump Stations:** Preventative and predictive maintenance was performed on the District's 11 pump stations and levee system. There were no significant problems with pumps or control systems to report . The usual spring time bloom of grassess and weeds has started . I have been working with a contractor to maintain the grounds and buildings.

I ordered and received the telemetry components for the electronic readout of the staff gauge to be installed at the Buena Vista pump station (PS1) as per the board trustees direction.

**Levee inspections:** A preliminary inspection was made of the levee system. A new fallen tree at 2030 Moering Ct. was found protruding into the Smith Canal waterway, although navigation is still possible. Please see the detailed inspection report attached. We were also joined by Deby Provost, Superintendent of (RD 828 . Our Inspection included the south bank of Smith Canal . The attached report reflects both banks of the Smith Canal.

This concludes my report, Respectfully:  
Abel Palacio - Reclamation District 1614 Superintendent





## **Reclamation District 1614 Monthly Waterside Inspection Report (With RD 828 Observations)**

**Personnel present:** Abel Palacio (RD 1614 Superintendent), Aaron Lickingteller (KSN), Deby Provost (RD 828 Superintendent)

**Inspection conducted:** Monday, April 21, 2025 at 8:30am –12:30pm. Low tide occurred at 8:49pm (0.0 feet) and high tide occurred at 12:11pm (3.3 feet). The following points of interest were observed during the inspection:

### **Photos of Smith Tract**





2030 Moering Ct.: Another of the plethora of trees on this property has fallen into Smith Canal.





1448 W. South Tuxedo Ave.: Dense vegetative overgrowth on the levee slope.



1510 W. South Tuxedo Ave.: The dock is slowly degrading with time.





1534 W. South Tuxedo Ave.: Yet more dense vegetation on the levee slope making inspection impossible.

---

### Photos of Weber Tract



Homeless river denizen at the corner of Shimizu & Occidental





Situation behind 1441 Dena Ct.



The northern terminus of Buena Vista Dr at Shimizu. A good place for riprap. Deby has said that people are stealing existing riprap in existing locations so maybe a larger size is in order.





1625 W. Walnut St.: Loads of debris clutter the waterside slope.



1701 N. Pershing Ave.: The two former homeless camps have been removed and nearly all the vegetation cleared. Now a new issue is evident on the waterside levee slope.

# ITEM 12

## **RD 1614: MASTER CALENDAR**

### **JANUARY**

### **FEBRUARY**

- Send out Form 700s, remind Trustees of April 1 filing date
- Update Document Retention Policy

### **MARCH**

- Evaluation Review of Employees

### **APRIL**

- April 1: Form 700s due
- Biannual Town Hall Meeting

### **MAY**

- Draft Budget

### **JUNE**

- June 15: Provide notice/make available to the public, documentation/materials regarding determination of Appropriations (15 days prior to meeting at which Appropriations will be adopted) (*Government Code* §7910).
- Approve Audit Contract for expiring fiscal year
- Adopt Annual Budget.
- Reminder that Liability Insurance Expires Annually the end of July.
- Adopt Annual CEQA Exemption for levee maintenance
- Adopt Annual Levee Subventions Agreement Resolution
- Notice for Appropriations Limit

### **JULY**

- Adopt Resolution for setting Appropriations and submit to County Assessor's Office.
- Adopt Resolution Establishing Annual Assessments.

### **AUGUST**

- August 1: Deadline to certify assessments for tax-roll and deliver to County (duration of current assessment: no expiration).
- Send handbills for collection of assessments for public entity-owned properties
- In election years, opening of period for secretary to receive petitions for nomination of Trustees (75 days from date of election.) (*Cal. Wat. Code* §50731.5)
- Employee Embezzlement Policy Expires this Month.
- Renewal of Insurance  
(Crime policy does not come up for renewal until 8/22/2026)

## SEPTEMBER

- In election years, last legal deadline to post notice that petitions for nomination of Trustees may be received (7 days prior to close of closure.) (*Cal. Wat. Code* §50731.5).
- In election years, closing of acceptance of petitions for nomination of Trustees (54 days from date of election.) (*Cal. Wat. Code* §50731.5).
- Review Status of Encroachment Permit request from Randy Pierson for fence at corner of Del Rio Ave and Kirk Ave.

## OCTOBER

- Publish Notice of Election, even numbered years (once per week, 4 times, commencing at least 1 month prior to election).
- Newsletter
- Biannual Town Hall Meeting.

## NOVEMBER

- Election: to be held date selected by Board each even-numbered year.

## DECEMBER

- New Trustee(s) take office, outgoing Trustee(s) term(s) end on first Friday of each even-numbered year.
- Follow up on Smith Canal Proposition 218 Reimbursement for costs advanced to SJAFCA.
- Election of Board officers (Election years)

### Term of Current Board Members:

Name	Term Commenced	Term Ends
Christian Gaines Appointed in lieu 11/8/22	First Friday 12/2/2022	First Friday of 12/4/2026
Kevin Kauffman	First Friday 12/6/2024	First Friday of 12/1/2028
Dominick Gulli	First Friday 12/6/2024	First Friday of 12/1/ 2028

### No Expiration on Assessment

### Emergency Operations Plan Review – September 2022.

### Reclamation District Meetings

- **First Monday of each month, at 2:00 P.M.  
at the offices of  
Neumiller & Beardslee  
3121 W. March Lane, Suite 100  
Stockton, California 95219**

# ITEM 14



**DEPARTMENT OF WATER RESOURCES**

DIVISION OF MULTI-BENEFIT INITIATIVES

P.O. BOX 942836

SACRAMENTO, CA 94236-0001

**MAY 08 2025**

Ms. Rhonda Olmo, Secretary  
Reclamation District 1614  
Post Office Box 4807  
Stockton, California 95204

Dear Ms. Olmo:

The Delta Levees Subventions Program would like to inform you that for Fiscal Year 2025-26, Reclamation District 1614 is considered an urban area according to the California Water Code.

California Water Code Section 12986 states:

*No costs incurred shall be reimbursed if the entire cost incurred per mile of project or nonproject levee is either:*

- A. Two thousand five hundred dollars (\$2,500) or less for a project or nonproject levee in an urban area.*
- B. One thousand dollars (\$1,000) or less for a project or nonproject levee in a rural area.*

According to California Water Code Section 12986, urban area is defined as an area in which 10 percent or more of the land area within the project area is used for residential use.

Based on this definition, Reclamation District 1614 is considered an urban area and will be responsible for the first \$2,500 per levee mile.

If you have any questions, please contact me at (916) 902-6667 or Sandra Maxwell of my staff at (916) 820-8129.

Sincerely,

A handwritten signature in blue ink, appearing to read 'Andrea L. Lobato'.

Andrea L. Lobato, P.E., Manager  
Delta Levees Program



# ITEM 15

Reclamation District 1614  
April - May 2025 Bills

NAME	INVOICE #	AMOUNT	TOTAL \$	WARRANT #	CHECK #	SUBVENTION FUND
Dominick Gulli - May 19, 2025 Meeting		\$100.00		6438		
			<b>\$100.00</b>			
Kevin Kauffman - May 19, 2025 Meeting		\$50.00		6439		
			<b>\$50.00</b>			
Christian Gaines - May 19, 2025 Meeting		\$50.00		6440		
			<b>\$50.00</b>			
Rhonda Olmo		\$1,865.50		6441		
			<b>\$1,865.50</b>			
Neumiller & Beardslee	353766	\$1,691.94		6442		
			<b>\$1,691.94</b>			
Kjeldsen, Sinnock & Neudeck, Inc.	40283	\$2,432.65		6443		
	40284	\$1,247.75				
	40285	\$423.50				
	40286	\$2,185.50				
	40287	\$971.00				
			<b>\$7,260.40</b>			
Delk Pest Control	267902	\$220.00		6444		
			<b>\$220.00</b>			
Dalek Lawn Care Service	176	\$450.00		6445		
	177	\$200.00				
	178	\$250.00				
			<b>\$900.00</b>			
A Specialized Printing Service	6566	\$377.22		6446		
			<b>\$377.22</b>			
Abel Palacio -April Payroll		\$1,603.16			Direct Deposit	
			<b>\$1,603.16</b>			
State of California Payroll Taxes - April		\$60.12			online	
			<b>\$60.12</b>			
Federal Government Payroll Taxes - April		\$511.21			online	
			<b>\$511.21</b>			
ADP - Period Ending 3/31/25	684390618	\$132.25			online	
ADP - Period Ending 4/30/25	689694250	\$132.25				
			<b>\$264.50</b>			
T-Mobile - April		\$78.54			online	
T-Mobile - May		\$83.56				
			<b>\$162.10</b>			
Comcast		\$150.77			online	
			<b>\$150.77</b>			
PG&E		\$2,710.56			online	
			<b>\$2,710.56</b>			
Visa - February 2025 - March 2025		\$122.94			online	
Visa - March 2025 - April 2025		\$1,073.58				
			<b>\$1,196.52</b>			
	<b>WARRANT TOTAL:</b>		<b>\$12,515.06</b>			
	<b>CHECKING TOTAL:</b>		<b>\$6,658.94</b>			
	<b>TOTAL BILLS PAID</b>		<b>\$19,174.00</b>			